

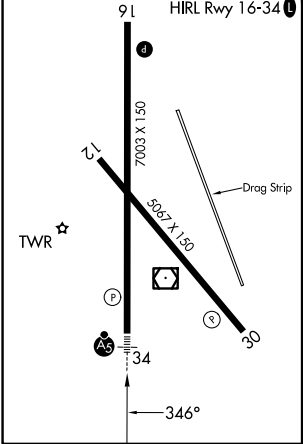
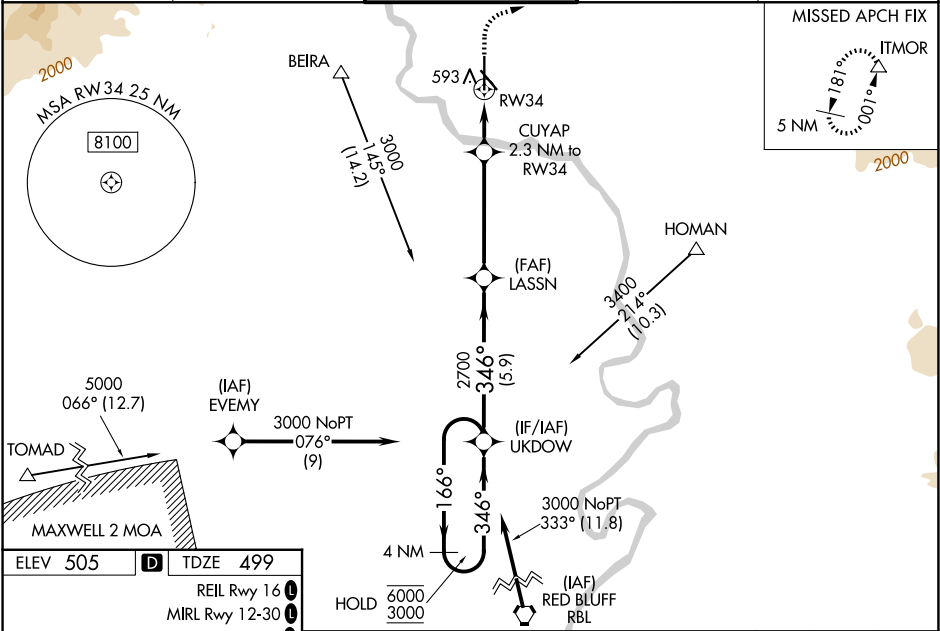
WAAS CH 56402 W34A	APP CRS 346°	Rwy Ldg TDZE Apt Elev	6997 499 505
--	------------------------	-----------------------------	---

RNAV (GPS) RWY 34

REDDING RGNL (RDD)

RNP APCH.	MALSRR	MISSED APPROACH: Climb to 1700 then climbing right turn to 5000 direct ITMOR, continue climb-in-hold to 5000.
<div><div>For uncompensated Baro-VNAV systems, LNAV/VNAV NA below -4°C or above 54°C. For inop ALS, increase LNAV/VNAV all Cnts visibility to ¾ SM and LNAV Cat C, D visibility to 1 SM.</div></div>		

ATIS 124.1	OAKLAND CENTER 132.2 350.3	REDDING TOWER ★ 119.8(CTAF) 0 269.25	GND CON 121.7	UNICOM 122.95
----------------------	--------------------------------------	--	-------------------------	-------------------------



VGSI and RNAV glidepath not coincident (VGSI Angle 3.00/TCH 55).				1700	5000	ITMOR
4 NM Holding Pattern				↑	↷	△