

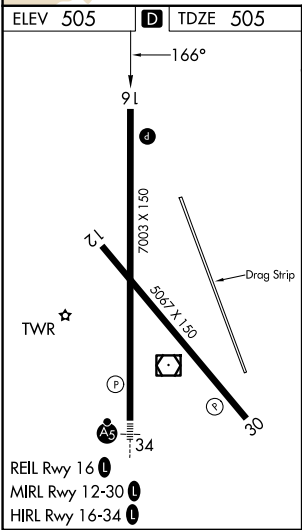
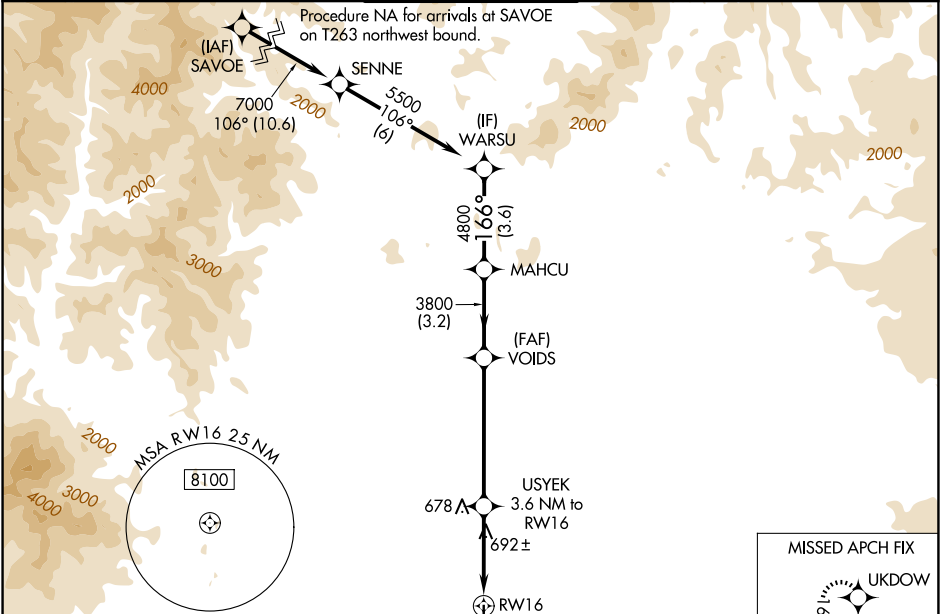
WAAS CH 86443 W16A	APP CRS 166°	Rwy Ldg TDZE 505 Apt Elev 505
--	------------------------	---

RNAV (GPS) RWY 16

REDDING RGNL (RDD)

RNP APCH.	MISSED APPROACH: Climb to 3000 direct UKDOW and hold.
Rwy 16 helicopter visibility reduction below ¾ SM NA. For uncompensated Baro-VNAV systems, LNAV/VNAV NA below -4°C or above 53°C.	

ATIS 124.1	OAKLAND CENTER 132.2 350.3	REDDING TOWER ★ 119.8 (CTAF) 0 269.25	GND CON 121.7	UNICOM 122.95
----------------------	--------------------------------------	---	-------------------------	-------------------------



VGSI and RNAV glidepath not coincident (VGSI Angle 3.43/TCH 40).																												
*LNAV only.		MAHCU																										
USYEK 3.6 NM to RW16		WARSU																										
RW16		VOIDS																										
1.3 NM		3800																										
2.3 NM		4800																										
5.3 NM		5500																										
3.2 NM		GP 3.43°																										
3.6 NM		TCH 55																										
1860*		3800																										
<table><tr><td>CATEGORY</td><td>A</td><td>B</td><td>C</td><td>D</td></tr><tr><td>LPV DA</td><td>755-¾</td><td>250 (300-¾)</td><td>775-⅞</td><td>270 (300-⅞)</td></tr><tr><td>LNAV/VNAV DA</td><td colspan="4">892-1½ 387 (400-1½)</td></tr><tr><td>LNAV MDA</td><td>960-1</td><td>455 (500-1)</td><td>960-1⅓</td><td>455 (500-1⅓)</td></tr><tr><td>CIRCLING</td><td>960-1 455 (500-1)</td><td>1000-1 495 (500-1)</td><td>1120-1¾ 615 (700-1¾)</td><td>1340-2¾ 835 (900-2¾)</td></tr></table>				CATEGORY	A	B	C	D	LPV DA	755-¾	250 (300-¾)	775-⅞	270 (300-⅞)	LNAV/VNAV DA	892-1½ 387 (400-1½)				LNAV MDA	960-1	455 (500-1)	960-1⅓	455 (500-1⅓)	CIRCLING	960-1 455 (500-1)	1000-1 495 (500-1)	1120-1¾ 615 (700-1¾)	1340-2¾ 835 (900-2¾)
CATEGORY	A	B	C	D																								
LPV DA	755-¾	250 (300-¾)	775-⅞	270 (300-⅞)																								
LNAV/VNAV DA	892-1½ 387 (400-1½)																											
LNAV MDA	960-1	455 (500-1)	960-1⅓	455 (500-1⅓)																								
CIRCLING	960-1 455 (500-1)	1000-1 495 (500-1)	1120-1¾ 615 (700-1¾)	1340-2¾ 835 (900-2¾)																								