

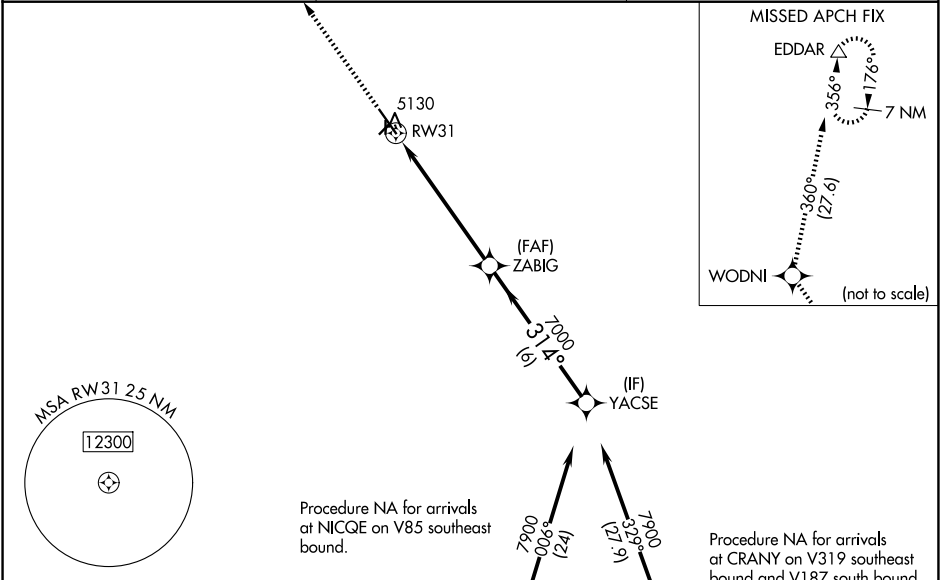
WAAS CH <b>50233</b> <b>W31A</b>	APP CRS <b>314°</b>	Rwy Idg TDZE Apt Elev	<b>6200</b> <b>5096</b> <b>5096</b>
--	------------------------	-----------------------------	---

RNAV (GPS) RWY 31

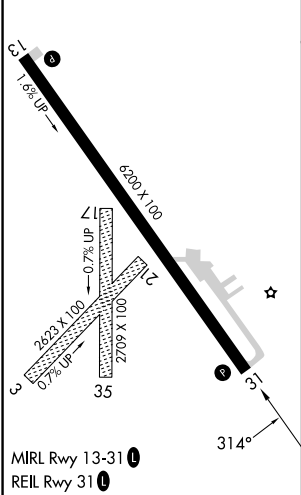
POWELL MUNI (POY)

RNP APCH.	<p><b>⚠</b> Circling NA to Rwys 3, 17, 21 and 35. Baro-VNAV and VDP NA when using Cody altimeter setting. Rwy 31 helicopter visibility reduction below <math>\frac{3}{4}</math> SM NA. For uncompensated Baro-VNAV systems, LNAV/VNAV NA below -25°C or above 48°C. When local altimeter setting not received, use Cody altimeter setting and increase all DA 54 feet and all MDA 60 feet.</p>	<p>MISSED APPROACH: Climb to 9500 direct WODNI and on track 360° to EDDAR and hold.</p>
-----------	--	---

AWOS-3 <b>119.275</b>	SALT LAKE CENTER <b>127.75 351.9</b>	UNICOM <b>122.7 (CTAF) 0</b>
--------------------------	---	---------------------------------



ELEV 5096	TDZE 5096
-----------	-----------



<b>△6662</b>	9500	WODNI	tr 360°	EDDAR	VGSI and RNAV glidepath not coincident (VGSI Angle 3.00/TCH 36).	YACSE
					ZABIG	
					7000	7900
					314°	7000
						GP 3.00° TCH 53
					0.7 NM	5.1 NM
					6 NM	
CATEGORY	A	B	C	D		
LPV DA		5346-1	250 (300-1)			
LNAV/VNAV DA		5346-1	250 (300-1)			
LNAV MDA		5380-1	284 (300-1)			
<b>Ⓢ</b> CIRCLING	5500-1 404 (500-1)	5560-1 464 (500-1)	5560-1½ 464 (500-1½)	5660-2 564 (600-2)		