

WAAS CH 65838 W12A	APP CRS 125°	Rwy Idg TDZE Apt Elev	5499 3647 3657
--	------------------------	-----------------------------	---

RNAV (GPS) RWY 12

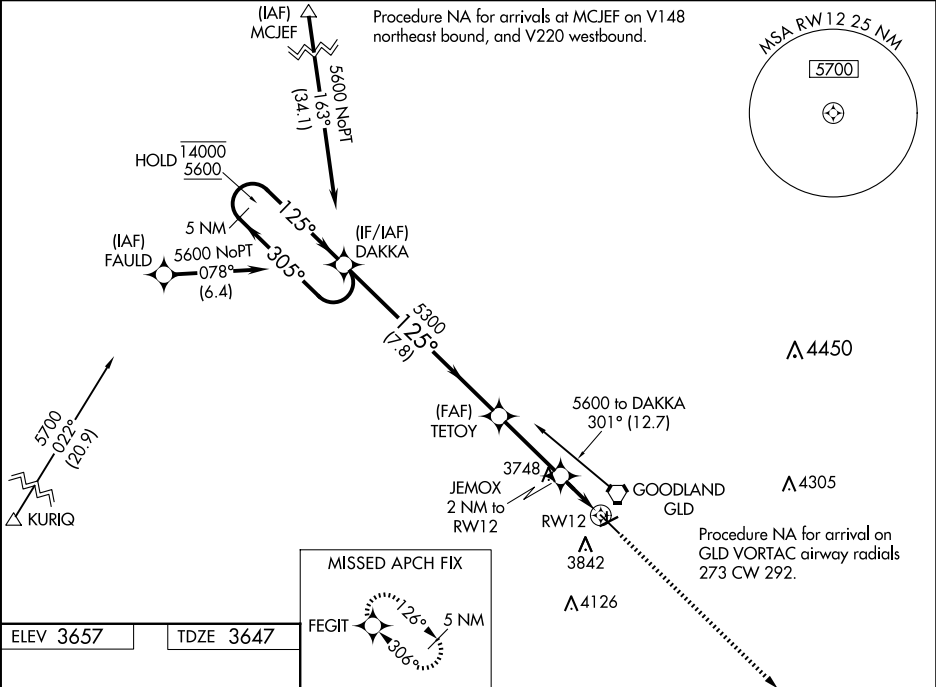
RENNER FLD/GOODLAND MUNI (GLD)

RNP APCH.

Circling NA to Rwy 17 and 35. Circling NA south of Rwy 5-30.
For uncompensated Baro-VNAV systems, procedure NA below
-23°C or above 54°C.

MISSED APPROACH: Climb to 5700 direct
FEGIT and hold.

ASOS 121.025	DENVER CENTER 132.7 226.675	UNICOM 122.8 (CTAF) 0
------------------------	---------------------------------------	---------------------------------



125°

3703

1754 X 40

35

0.6° UP

4001 X 75

5499 X 100

AS

90

REIL Rwy 12 0

MIRL Rwy 5-23 and 12-30 0

5 NM Holding Pattern

DAKKA

14000 5600

305°

125°

5300

125°

5300

7.8 NM

3.1 NM

1 NM

1 NM

5700

FEGIT

*LNAV only

*1 NM to RWY12

RWY12

CATEGORY	A	B	C	D
LPV DA		3897-1	250 (300-1)	
LNAV/VNAV DA		4021-1	374 (400-1)	
LNAV MDA		4000-1	353 (400-1)	
CIRCLING	4060-1 403 (500-1)	4120-1 463 (500-1)	4120-1½ 463 (500-1½)	4240-2 583 (600-2)

NC-2, 07 AUG 2025 to 04 SEP 2025

NC-2, 07 AUG 2025 to 04 SEP 2025