

LOC/DME I-PUC 109.35 Chan 30(Y)	APP CRS 007°	Rwy Ldg TDZE 5862 Apt Elev 5958
---	------------------------	--

ILS or LOC RWY 1

CARBON COUNTY RGNL/BUCK DAVIS FLD (PUC)

DME required for procedure entry. DME required.

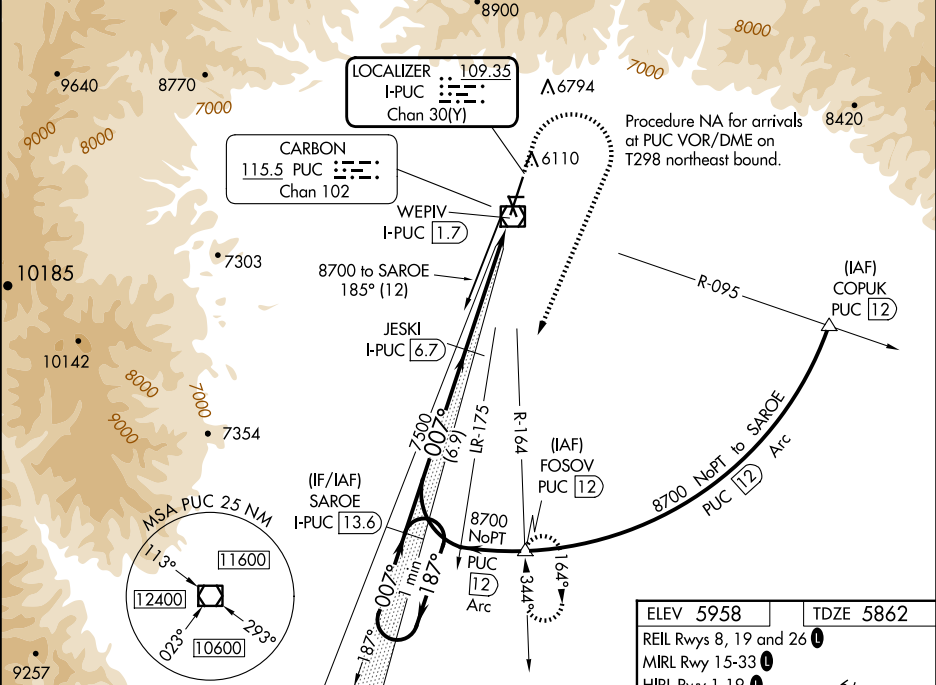
NA

Circling NA at night. For inoperative ALS, increase S-ILS 1 all Cats visibility to ¾ SM.
Inoperative table does not apply to S-ILS 1# all Cats.

MALSF

MISSED APPROACH: Climb to 6300 then climbing right turn to 10000 on heading 200° and on PUC VOR/DME R-164 to FOSOV/PUC 12 DME and hold, continue climb-in-hold to 10000. #Missed approach requires minimum climb of 339 feet per NM to 7100.

ASOS 135.425	SALT LAKE CENTER 133.9 370.85	UNICOM 122.8 (CTAF) 0
------------------------	---	---------------------------------



Use I-PUC DME when on the localizer course.

One Minute Holding Pattern

8700

187°

007°

7500

007°

7500

6.9 NM

4 NM

1 NM

0.2

SAROE I-PUC 13.6

JESKI I-PUC 6.7

WEPIV I-PUC 1.7

*I-PUC 2.7

*LOC only.

GS 3.00°

TCH 54

CATEGORY	A	B	C	D
S-ILS 1#		6062-¾	200 (200-¾)	
S-ILS 1		6127-¾	265 (200-¾)	
S-LOC 1		6240-¾	378 (300-¾)	
CIRCLING	6660-1 702 (800-1)	6860-1¼ 902 (1000-1¼)	7120-3 1162 (1200-3)	NA

