

VOR/DME CMA	APP CRS	Rwy Idg	6013
115.8	247°	TDZE	77
Chan 105		Apt Elev	77

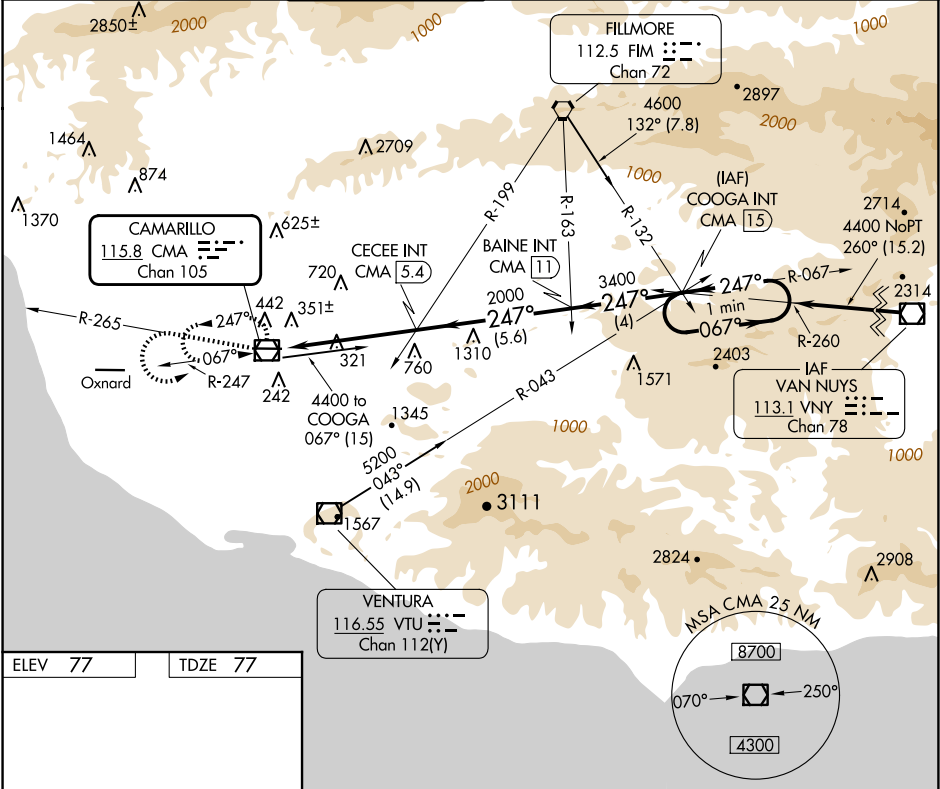
VOR RWY 26

CAMARILLO (CMA)

Circling not authorized north of Rwy 8/26.

MISSED APPROACH: Climb to 2000 via CMA R-265 then climbing left turn to 4400 direct CMA VOR/DME and hold.

ATIS	POINT MUGU APP CON	CAMARILLO TOWER	GND CON	CLNC DEL	POINT MUGU CLNC DEL	UNICOM
126.025	124.7 335.5	128.2 (CTAF) 0 269.4	121.8	121.8	120.75 279.55	122.95



ELEV 77

TDZE 77

MRL Rwy 8-26 0

REIL Rwy 8 and 26 0

	2000	4400	CMA	VGSI and descent angles not coincident (VGSI Angle 3.00/TCH 48).	COOGA INT CMA 15	One Minute Holding Pattern
	CMA R-265		CECEE INT CMA 5.4	Baine Int CMA 11		
			CMA 0.5			
			3.61°			
			TCH 48			
			247°			
			3400			
			2000			
			4.9 NM	5.6 NM	4 NM	

CATEGORY	A	B	C	D
S-26	1100-1¼ 1023 (1100-1¼)	1100-1½ 1023 (1100-1½)	1100-3 1023 (1100-3)	NA
CIRCLING	1100-1¼ 1023 (1100-1¼)	1100-1½ 1023 (1100-1½)	1100-3 1023 (1100-3)	NA