

RNAV (GPS) RWY 23

WAAS Chan 56203 W23A	APCH CRS 225°	Rwy Idg 10,926 TDZE 571 Arprt Elev 571
--	-------------------------	---

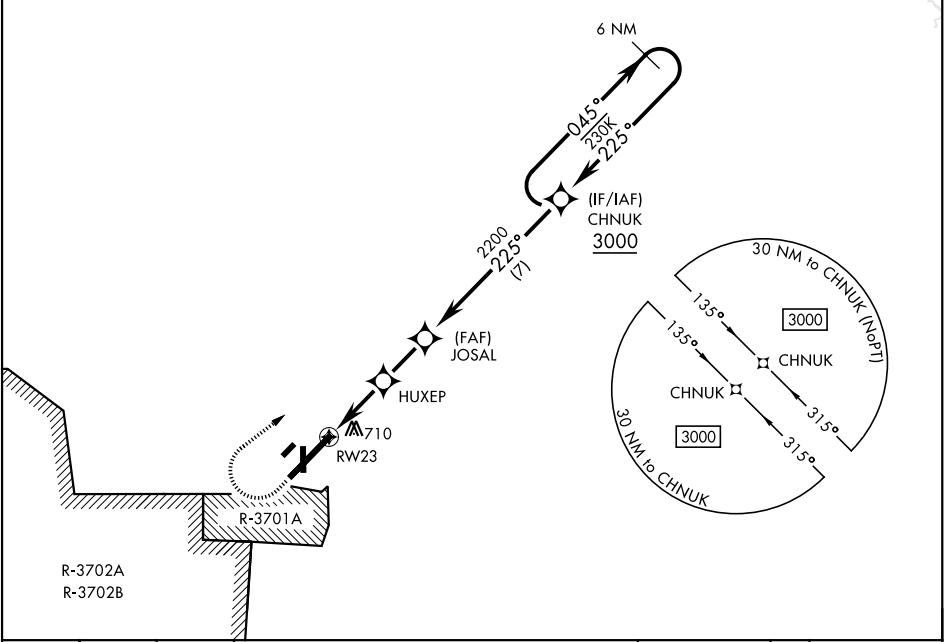
[USA]

CAMPBELL AAF (FORT CAMPBELL) (KHOP)

RNP APCH - GPS * When ALS inop, increase RVR to 40, vis to ¾ mile. ** When ALS inop, increase RVR to 55, vis to 1 mile. *** When ALS inop, increase CAT AB RVR to 55, vis to 1 mile, CAT CDE RVR to 60, vis to 1½ miles. **** Circling not authorized SE of Rwy 5-23.	SSALR A3	MISSED APPROACH: Climb to 1000 then climbing right turn to 3000 direct CHNUK and hold.
---	--------------------	--

ATIS 125.175 308.4	APP CON 118.1 269.525	TOWER 120.9 278.8	GND CON 121.8 266.8	CLNC DEL 138.8	ASR/PAR
------------------------------	---------------------------------	-----------------------------	-------------------------------	--------------------------	---------

For uncompensated BARO-VNAV systems, LNAV/VNAV NA below -19°C (-2°F) or above 54°C (130°F).



1000	3000	CHNUK	6 NM Holding Pattern			ELEV 571	TDZE 571
VGSi and RNAV glidepath not coincident (VGSi Angle 3.00/TCH 78).							
CATEGORY	A	B	C	D	E		
LPV DA *	771/24		200	(200-½)			
LNAV/VNAV DA **	949/35		378	(400-¾)			
LNAV MDA ***	960/24	389 (400-½)	960/35	389	(400-¾)		
**** CIRCLING	1060-1	489 (500-1)	1060-1½ 489 (500-1½)	1140-2	569 (600-2)	HIRL all rwys	

RNAV (GPS) RWY 23

SE-1, 07 AUG 2025 to 04 SEP 2025

SE-1, 07 AUG 2025 to 04 SEP 2025