

RNAV (GPS) RWY 18

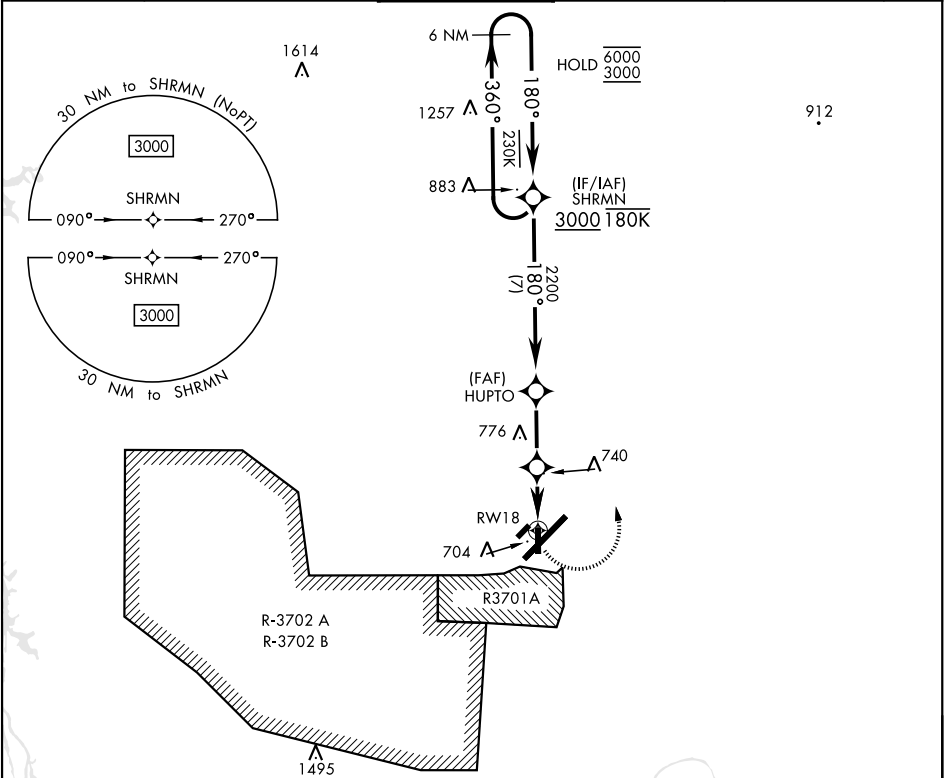
APCH CRS	Rwy ldg	4500
180°	TDZE	562
	Arpt Elev	571

[USA]

CAMPBELL AAF (FORT CAMPBELL) (KHOP)

RNAV1 - GPS	MISSED APPROACH: Climbing left turn to 3000 direct SHRMN and hold.
DME required	
▼ * Circling not authorized SE of Rwy 5-23.	

ATIS	APP CON	TOWER	GND CON	CLNC DEL	ASR/ PAR
125.175 308.4	118.1 269.525	120.9 278.8	121.8 266.8	138.8	



6 NM Holding Pattern

SHRMN

VGSI and RNAV glidepath not coincident (VGSI Angle 3.00/TCH 50).

3000

SHRMN

360°

180°

6000

3000

HUPTO

2200

3.00° TCH 45

HOLIK

1340

1.5 NM to RW18

RW18

2.7 NM

2.3 NM

ELEV 571

TDZE 562

180°

2446 x 90

10,926 x 150

81

4001 x 065PT

100

36

TWR 704

36

☆

CATEGORY	A	B	C	D
LNVA MDA	1080-1	518 (600-1)	1080-1 $\frac{3}{8}$ 518 (600-1 $\frac{3}{8}$)	NA
C CIRCLING*	1080-1	509 (600-1)	1080-1 $\frac{1}{2}$ 509 (600-1 $\frac{1}{2}$)	NA

HIRL all rwys

RNAV (GPS) RWY 18

SE-1, 07 AUG 2025 to 04 SEP 2025

SE-1, 07 AUG 2025 to 04 SEP 2025