
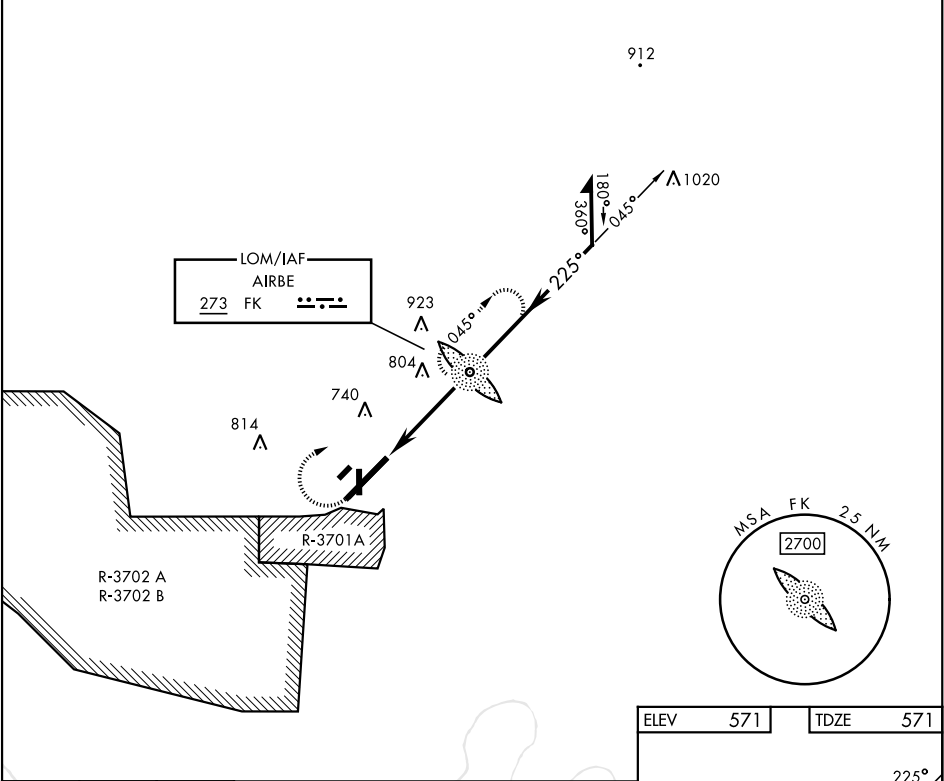



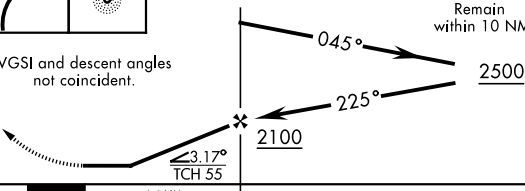


NDB RWY 23

NDB FK <u>273</u>		APCH CRS 225°	Rwy Idg 10,926 TDZE 571 Arpt Elev 571	[USA]	CAMPBELL AAF (FORT CAMPBELL) (KHOP)		
RADAR required				<div>SSALR</div> <div></div>	MISSED APPROACH: Climb to 1200, then climbing right turn to 2500 direct to FK LOM and continue climb-in-hold (max 230 KIAS).		
<div><div><div>▼</div><div>* When ALS inop, increase CAT AB RVR to 55, vis to 1mile; CAT CD vis to 1½ miles.</div><div>** Circling not authorized SE of Rwy 5-23.</div></div></div>							
ATIS 125.175 308.4		APP CON 118.1 269.525		TOWER 120.9 278.8	GND CON 121.8 266.8	CLNC DEL 138.8	ASR/PAR



1200	2500	FK		
				
VGSI and descent angles not coincident.				
				
CATEGORY	A	B	C	D
S-23*	1120/40	549 (600-¾)	1120/60	549 (600-½)
CIRCLING**	1120-1	549 (600-1)	1120-1½ 549 (600-1½)	1140-2 569 (600-2)

ELEV	571	TDZE	571
HIRL all rwys			
FAF to MAP 4.4 NM			
Knots	60	90	120 150 180
Min:Sec	4:24	2:56	2:12 1:46 1:28

NDB RWY 23

SE-1, 07 AUG 2025 to 04 SEP 2025

SE-1, 07 AUG 2025 to 04 SEP 2025