

ILS or LOC RWY 23

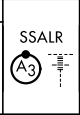
LOC/DME I-FKP <b>111.9</b> Chan <b>56</b>	APCH CRS <b>225°</b>	Rwy Idg <b>10,926</b> TDZE <b>571</b> Arpt Elev <b>571</b>
---	-------------------------	--

[USA]

CAMPBELL AAF (FORT CAMPBELL) (KHOP)

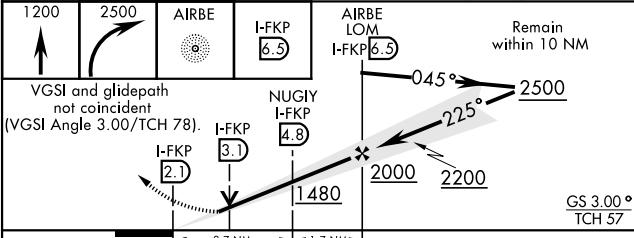
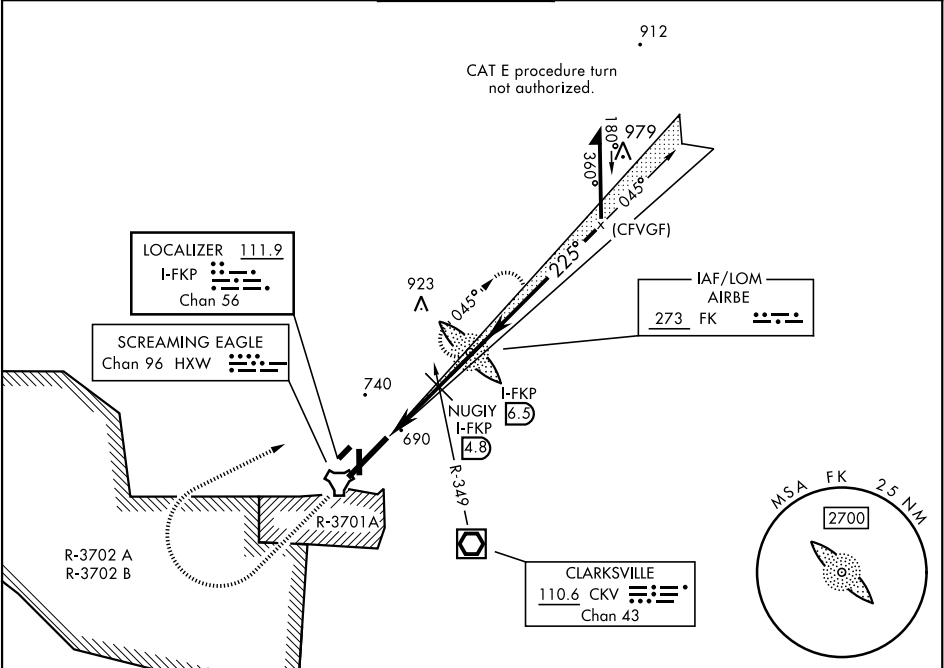
RADAR required

▼ \* When ALS inop, increase RVR to 40, vis to ¾ miles.  
\*\* When ALS inop, increase CAT AB RVR to 55, vis to 1 mile; CAT CDE RVR to 60, vis to 1½ miles.  
\*\*\* Circling not authorized SE of Rwy 5-23.

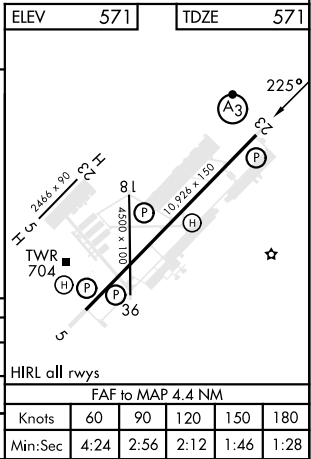


MISSED APPROACH: Climb to 1200 then climbing right turn to 2500 direct AIRBE LOM/I-FKP 6.5 DME, continue climb-in-hold to 2500 (max 230 KIAS).

ATIS <b>125.175 308.4</b>	APP CON <b>118.1 269.525</b>	TOWER <b>120.9 278.8</b>	GND CON <b>121.8 266.8</b>	CLNC DEL <b>138.8</b>	ASR/PAR
------------------------------	---------------------------------	-----------------------------	-------------------------------	--------------------------	---------



CATEGORY	A	B	C	D	E
S-ILS 23 *	771/24		200	(200-½)	
S-LOC 23 **	960/24	389 (400-½)	960/35	389	(400-¾)
*** CIRCLING	1060-1	489 (500-1)	1060-1½ 489 (500-1½)	1140-2	569 (600-2)



ILS or LOC RWY 23

SE-1, 07 AUG 2025 to 04 SEP 2025

SE-1, 07 AUG 2025 to 04 SEP 2025