

WAAS CH 40012 W16A	APP CRS 165°	Rwy Ldg TDZE Apt Elev	10518 100 100
--	------------------------	-----------------------------	--

RNAV (GPS) RWY 16

PORTSMOUTH INTL AT PEASE (PSM)

RNP APCH - GPS.

▼

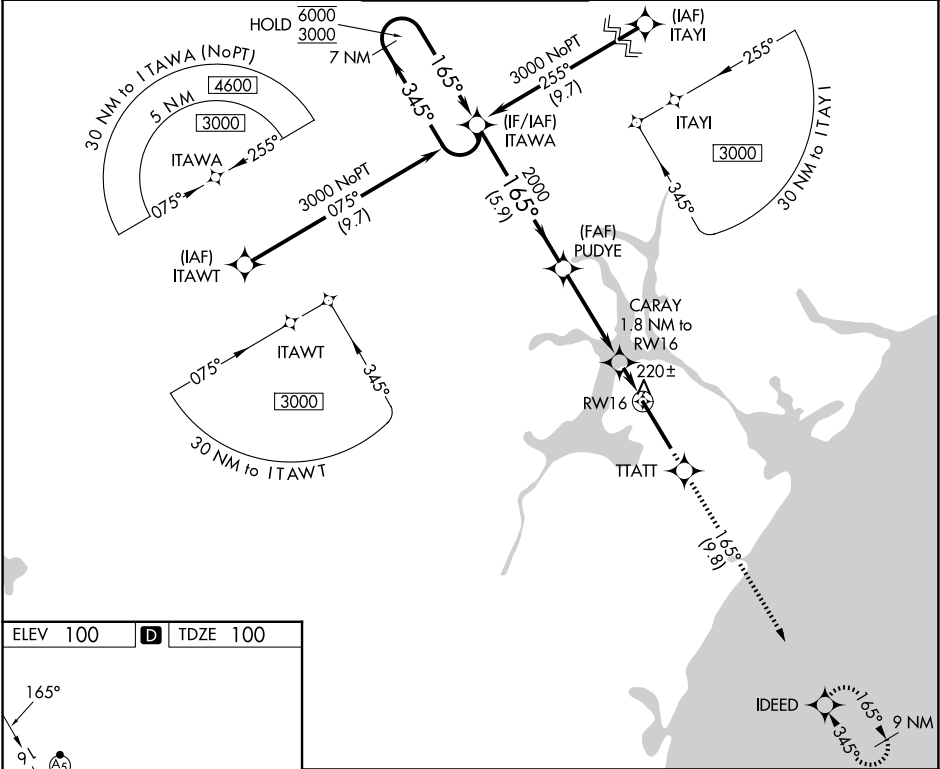
⚠

For uncompensated Baro-VNAV systems, LNAV/VNAV NA below -15°C or above 54°C. Circling NA east of Rwy 16-34. For inop ALS, increase LPV Cat E visibility to RVR 4500; increase LNAV/VNAV all Cats visibility to RVR 4500; increase LNAV Cat C/D/E visibility to RVR 5500. * RVR 1800 authorized with use of FD or AP or HUD to DA (NA when using Rochester altimeter setting).

MALSR

MISSED APPROACH:
Climb to 3000 direct
TTATT and track 165° to
IDEED and hold, continue
climb-in-hold to 3000.

ATIS	BOSTON APP CON	PORTSMOUTH TOWER	GND CON	CLNC DEL
132.05 273.5	125.05 269.4	128.4 269.0	120.95 275.8	335.8



ELEV 100

D

TDZE 100

VGSI and RNAV glidepath not coincident
7 NM (VGSI Angle 3.00°/TCH 72).

Holding Pattern ITAWA

GP 3.00°
TCH 55

CATEGORY	A	B	C	D	E
LPV DA*	300/24 200 (200-½)				
LNAV/VNAV DA	397/24 297 (300-½)				
LNAV MDA	480/24	380 (400-½)	480/35	380 (400-¾)	
CIRCLING	500-1 400 (400-1)	560-1 460 (500-1)	680-1½ 580 (600-1½)	780-2¼ 680 (700-2¼)	800-2½ 700 (700-2½)

PORTSMOUTH, NEW HAMPSHIRE

Amdt 3A 30DEC21

43°05'N-70°49'W

PORTSMOUTH INTL AT PEASE (PSM)

RNAV (GPS) RWY 16