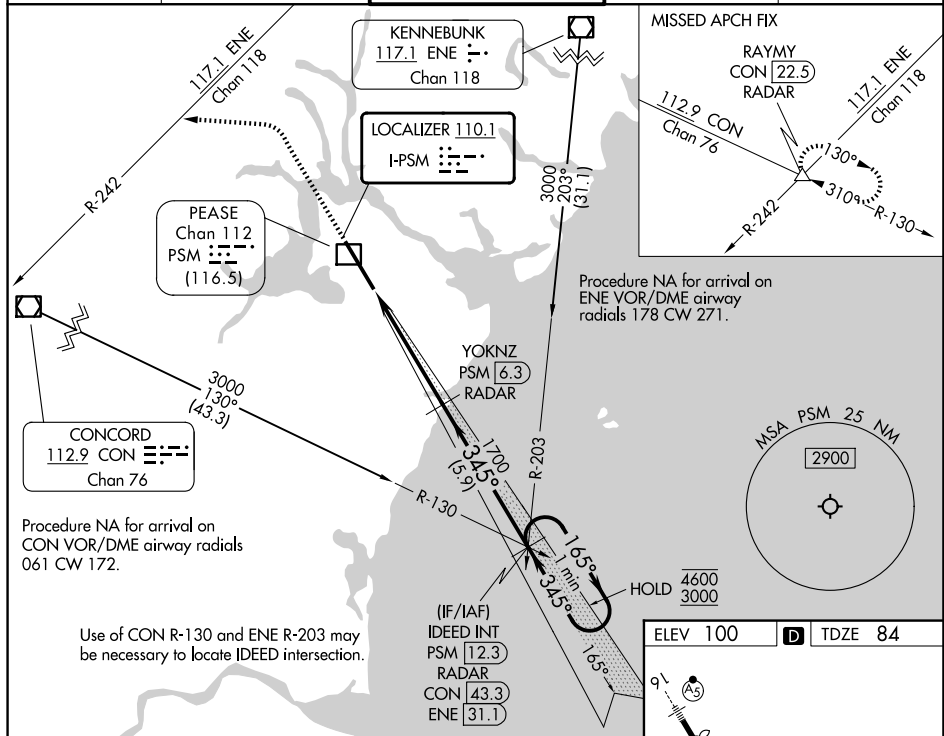


ILS or LOC RWY 34
PORTSMOUTH INTL AT PEASE (PSM)

MALSR

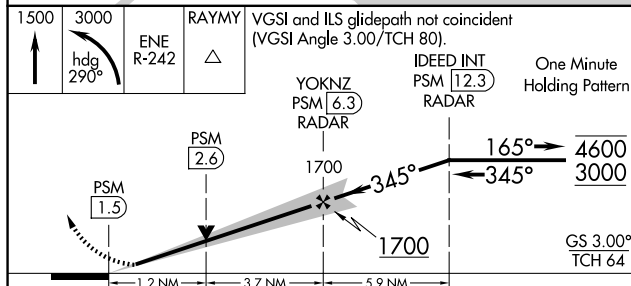
MISSED APPROACH: Climb to 1500 then climbing left turn on heading 290° to 3000 and ENE VOR/DME R-242 to RAYMY INT/CON VOR/DME 22.5 DME/RADAR and hold.

Procedure NA for arrival on
ENE VOR/DME airway
radials 178 CW 271.



Procedure NA for arrival on
CON VOR/DME airway radials
061 CW 172.

Use of CON R-130 and ENE R-203 may be necessary to locate IDEED intersection.



FAF to MAP 4.9 NM					
Knots	60	90	120	150	180
Min:Sec	4:54	3:16	2:27	1:58	1:38