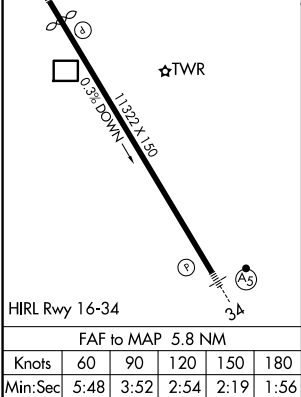
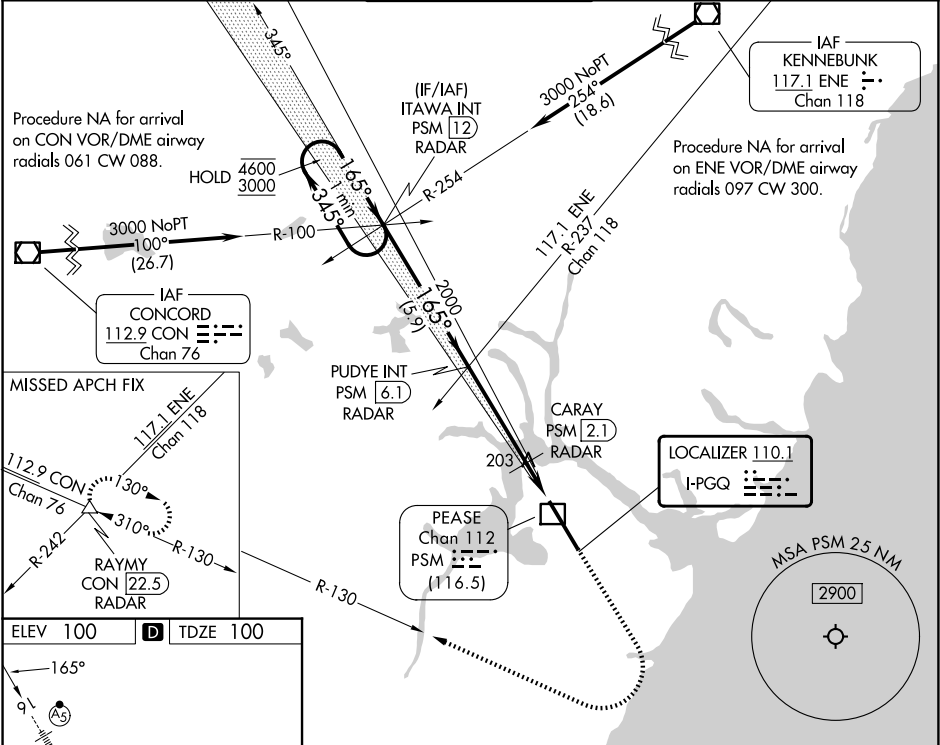


LOC I-PGQ 110.1	APP CRS 165°	Rwy Ldg TDZE 100 Apt Elev 100
---------------------------	------------------------	---

ILS or LOC RWY 16
PORTSMOUTH INTL AT PEASE (PSM)

DME or RADAR required.	MALSR	MISSED APPROACH: Climb to 1500 then climbing right turn to 3000 on CON VOR/DME R-130 to RAYMY INT/CON VOR/DME 22.5 DME/RADAR and hold.
⚠ Circling NA east of Rwy 16-34. DME from PSM DME. Simultaneous reception of I-PGQ and PSM DME required. For inop ALS, increase S-ILS 16 Cat D visibility to RVR 4000; increase S-LOC 16 Cat C/D/E visibility to RVR 5500. * RVR 1800 authorized with use of FD or AP or HUD to DA (NA when using Rochester altimeter setting).		

ATIS 132.05 273.5	BOSTON APP CON 125.05 269.4	PORTSMOUTH TOWER 128.4 269.0	GND CON 120.95 275.8	CLNC DEL 335.8
-----------------------------	---------------------------------------	--	--------------------------------	--------------------------



VGSI and ILS glidepath not coincident (VGSI Angle 3.00/TCH 72).				
One Minute Holding Pattern				
ITAWA INT PSM [12] RADAR				
PUDYE INT PSM [6.1] RADAR				
CARAY PSM [2.1] RADAR				
PEASE Chan 112 PSM [116.5]				
LOCALIZER 110.1 I-PGQ				
MISSED APCH FIX				
RAYMY CON 22.5 PSM [22.5] RADAR				
MSA PSM 25 NM 2900				
ELEV 100 TDZE 100				
HOLD 4600 3000				
GS 3.00° TCH 55				
FAF to MAP 5.8 NM				
Knots 60 90 120 150 180				
Min:Sec 5:48 3:52 2:54 2:19 1:56				
PORTSMOUTH, NEW HAMPSHIRE				
Amdt 3A 30DEC21				
43°05'N-70°49'W				
PORTSMOUTH INTL AT PEASE (PSM)				
ILS or LOC RWY 16				

NE-1, 07 AUG 2025 to 04 SEP 2025

NE-1, 07 AUG 2025 to 04 SEP 2025