

WAAS CH 99320 W27A	APP CRS 272°	Rwy Ldg 5549 TDZE 34 Apt Elev 48
--	------------------------	---

RNAV (GPS) RWY 27

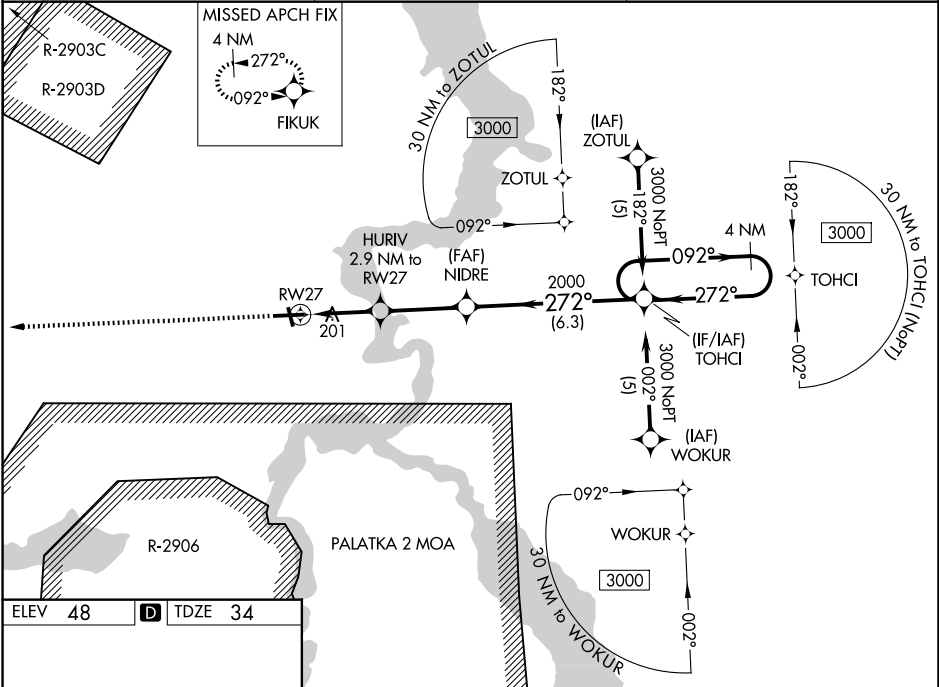
PALATKA MUNI/LT KAY LARKIN FLD (28J)

RNP APCH-GPS

Baro-VNAV NA when using St. Augustine altimeter setting. For uncompensated Baro-VNAV systems, LNAV/VNAV NA below -15°C or above 54°C. Rwy 27 helicopter visibility reduction below ¼ SM NA. When local altimeter setting not received, use St Augustine altimeter setting and increase LPV DA to 419 feet and all visibilities ¼ SM. Increase LNAV/VNAV DA to 582 feet and all visibilities ¼ SM. Increase all MDAs 80 feet and LNAV visibility Cat C/D ½ SM, and Circling visibility Cat C/D ¼ SM. Circling Rwy 17, 35 NA at night.

MISSED APPROACH:
Climb to 3000 direct FIKUK and hold.
Continue climb-in-hold to 3000.

AWOS-3 119.925	JACKSONVILLE APP CON 118.175 338.25	UNICOM 122.8 (CTAF)
--------------------------	---	-------------------------------



ELEV 48

TDZE 34

REIL Rwy 9 and 27

MIRL Rwy 9-27 and 17-35

3000	FIKUK	VGSI and RNAV glidepath not coincident (VGSI Angle 3.50/TCH 38).		TOHCI	4 NM Holding Pattern
HURIV 2.9 NM to RW27	NIDRE 2000	272°		092°	3000
1.1 NM to RW27	1000	2000	GP 3.00° TCH 40		
1.1	1.9 NM	3.1 NM	6.3 NM		
CATEGORY	A	B	C	D	
LPV DA	354-7/8		320 (400-7/8)		
LNAV/VNAV DA	517-13/8		483 (500-13/8)		
LNAV MDA	460-1 426 (500-1)		460-1 1/4 426 (500-1 1/4)		460-1 1/4 426 (500-1 1/4)
CIRCLING	620-1 572 (600-1)		700-1 3/4 652 (700-1 3/4)		700-2 652 (700-2)

SE-3, 07 AUG 2025 to 04 SEP 2025

SE-3, 07 AUG 2025 to 04 SEP 2025