

WAAS CH 99423 W33A	APP CRS 336°	Rwy Ldg TDZE 50 Apt Elev 54
--	------------------------	---

RNAV (GPS) RWY 33

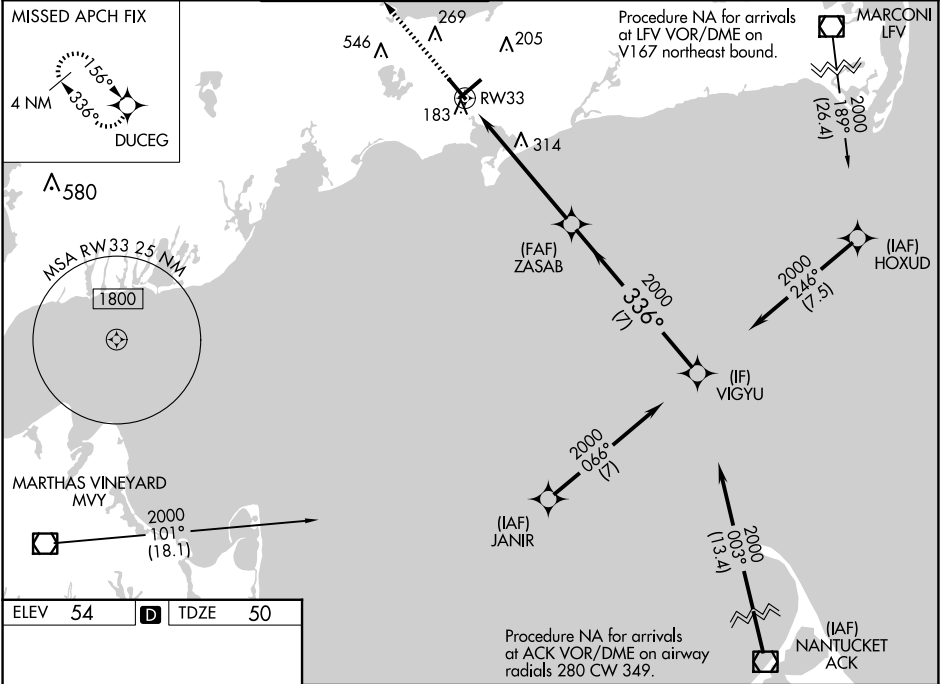
CAPE COD GATEWAY (HYA)

RNP APCH - GPS

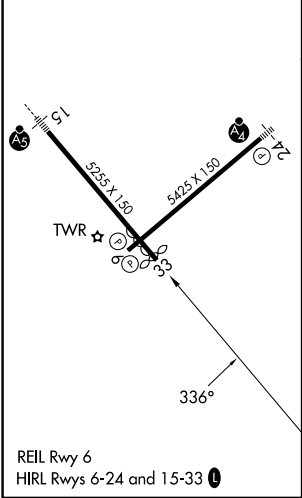
▼ Baro-VNAV NA when using Chatham altimeter setting. For uncompensated Baro-VNAV systems, LNAV/VNAV NA below -15°C or above 43°C. When local altimeter setting not received, use Chatham altimeter setting: increase LPV DA to 332 feet; increase LNAV/VNAV DA to 393 feet; increase all MDAs 40 feet and visibility Cats C and D ¼ SM. Rwy 33 helicopter visibility reduction below ¾ SM NA. Circling Rwy 24 at night, operational VGSI required, remain on or above VGSI glidepath until threshold.

MISSED APPROACH:
Climb to 2000 direct
DUCEG and hold.

ATIS 123.8	BOSTON APP CON 118.2 284.6	HYANNIS TOWER ★ 119.5 (CTAF) 0 257.8	GND CON 118.45	CLNC CON 125.15	CLNC DEL 120.125 (When twr closed)	UNICOM 122.95
----------------------	--------------------------------------	--	--------------------------	---------------------------	---	-------------------------



ELEV 54	D	TDZE 50
---------	----------	---------



2000

DUCEG

VGSI and RNAV glidepath not coincident
(VGSI Angle 3.00/TCH 53).

ZASAB

2000

VIGYU

2000

336°

2000

GP 3.00°

TCH 60

RW33

6 NM

7 NM

CATEGORY	A		B	C	D
LPV DA	300-1		250 (300-1)		
LNAV/VNAV DA	361-1		311 (400-1)		
LNAV MDA	620-1	570 (600-1)		620-1½	570 (600-1½)
CIRCLING	620-1	566 (600-1)		860-2¼ 806 (900-2¼)	860-2½ 806 (900-2½)