

LOC/DME I-BCU  
**108.95**  
Chan **26 (Y)**

APP CRS  
**156°**

Rwy Ldg **5255**  
TDZE **54**  
Apt Elev **54**

ILS or LOC RWY 15

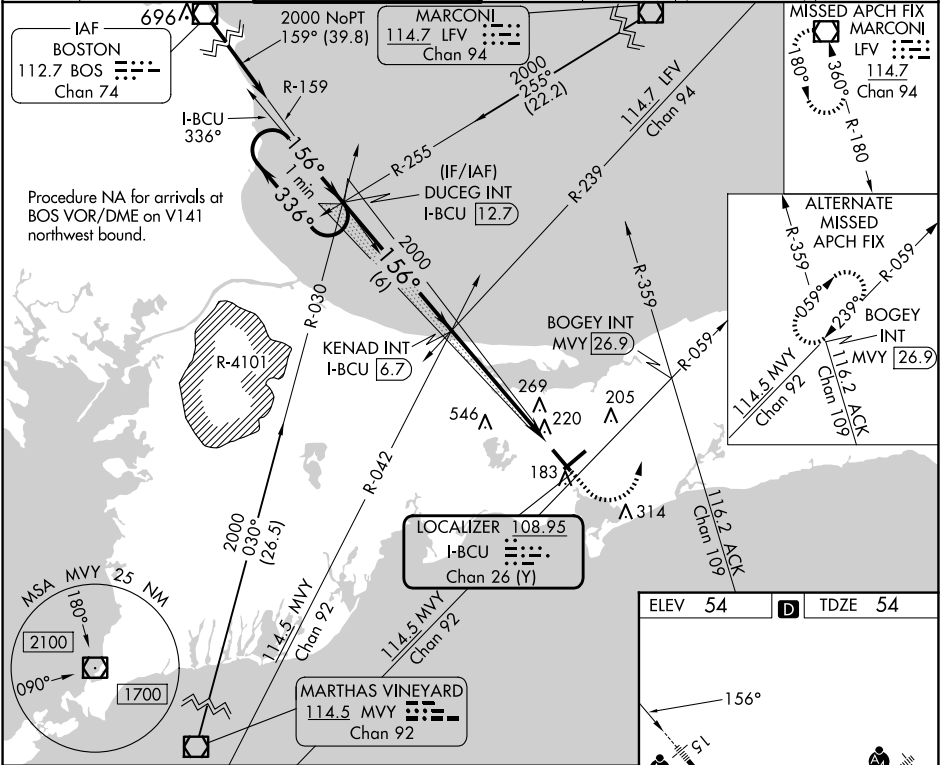
CAPE COD GATEWAY (HYA)

⚠ VDP NA when using Chatham altimeter setting. When local altimeter setting not received, use Chatham altimeter setting and increase all DA to 286 feet and all MDA 40 feet, increase S-LOC 15 Cat C and D visibility to RVR 5000 and Circling Cat C and D visibility ¼ mile. For Inop ALS when using Chatham altimeter setting, increase S-LOC 15 Cats A and B visibility to RVR 5500. Circling Rwy 24 at night, operational VGS1 required, remain on or above VGS1 glidepath until threshold. Rwy 15 helicopter visibility reduction below RVR 4000 NA. \*\*RVR 1800 authorized with use of FD or AP or HUD to DA (NA when using Chatham altimeter setting).

MALSR

MISSED APPROACH:  
Climb to 1000 then climbing left turn to 2000 direct LRV VOR/DME and hold.

ATIS <b>123.8</b>	BOSTON APP CON <b>118.2 284.6</b>	HYANNIS TOWER★ <b>119.5 (CTAF) 0 257.8</b>	GND CON <b>118.45</b>	CLNC DEL <b>125.15</b>	CLNC DEL <b>120.125</b> (When twr closed)	UNICOM <b>122.95</b>
----------------------	--------------------------------------	---	--------------------------	---------------------------	---	-------------------------



One Minute Holding Pattern

DUCEG INT I-BCU 12.7

KENAD INT I-BCU 6.7

1000

2000

LTV

2000

GS 3.10° TCH 55

6 NM

4.5 NM

1.1 NM

CATEGORY	A	B	C	D
S-ILS 15		**254/24	200 (200-½)	
S-LOC 15		480/40	426 (500-¾)	
CIRCLING	560-1 506 (600-1)	580-1 526 (600-1)	860-2¼ 806 (900-2¼)	860-2½ 806 (900-2½)

REIL Rwy 6  
HIRL Rlys 6-24 and 15-33

FAF to MAP 5.7 NM

Knots	60	90	120	150	180
Min:Sec	5:42	3:48	2:51	2:17	1:54