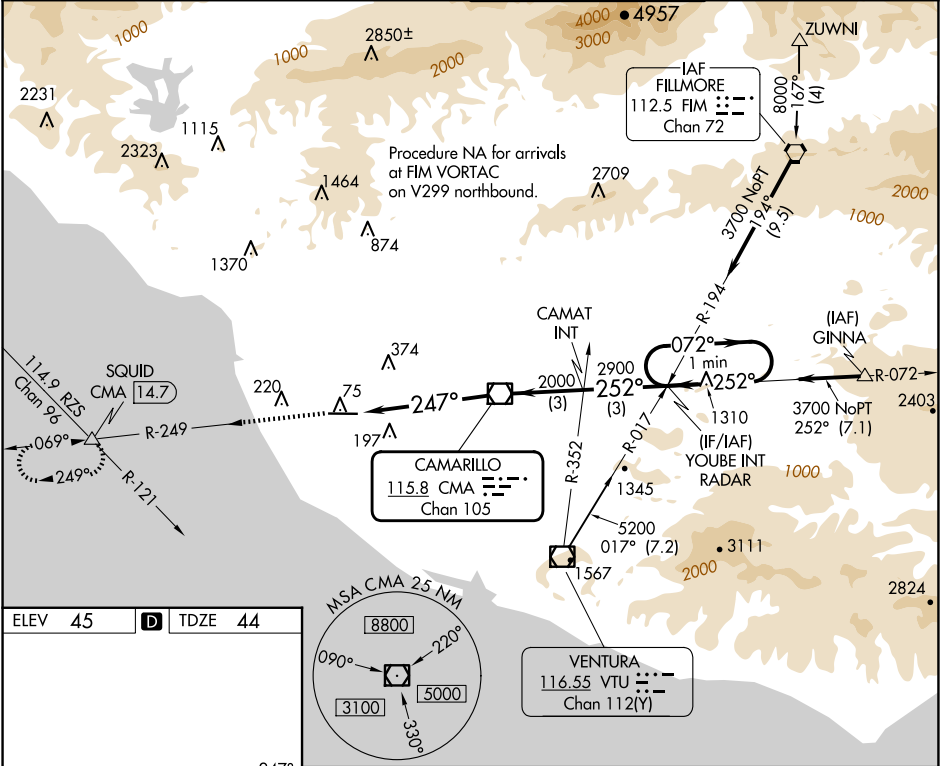


VOR/DME CMA 115.8 Chan 105	APP CRS 247°	Rwy Idg 5500 TDZE 44 Apt Elev 45	VOR RWY 25 OXNARD (OXR)
--	------------------------	---	----------------------------

DME required. ⚠ For inop ALS, when using Camarillo altimeter setting, increase Cat C/D visibility to 1¾ SM. Rwy 25 helicopter visibility reduction below ¾ SM NA. When local altimeter setting not received, use CMA altimeter setting and increase all MDAs 20 feet, increase Circling Cat C visibility ¼ SM.	MALSF ⚠	MISSED APPROACH: Climb to 2000 on CMA R-249 to SQUID INT/ 14.7 DME and hold.
---	------------	--

ATIS 118.05	POINT MUGU APP CON★ 124.7 335.5	OXNARD TOWER★ 134.95 (CTAF) 0 257.8	GND CON 121.9
-----------------------	---	---	-------------------------



ELEV 45	D	TDZE 44
REIL Rwy 7		
MIRL Rwy 7-25		
FAF to MAP 5.3 NM		
Knots	60	90 120 150 180
Min:Sec	5:18	3:32 2:39 2:07 1:46
CATEGORY		
S-25	620-1	576 (600-1)
CIRCLING	620-1	575 (600-1)
CATEGORY		
S-25	620-1¾	576 (600-1¾)
CIRCLING	620-1¾	575 (600-1¾)