

WAAS CH 86299 W25A	APP CRS 256°	Rwy Idg TDZE 44 Apt Elev 45
--	------------------------	---

RNAV (GPS) RWY 25

OXNARD (OXR)

RNP APCH - GPS.

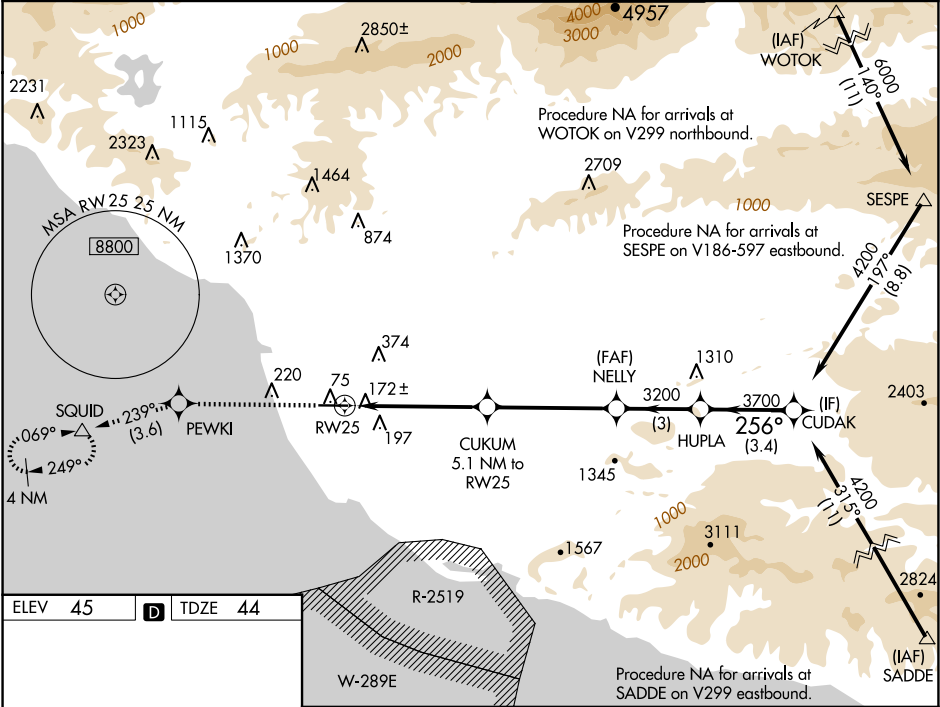
⚠

Inoperative table does not apply. Baro-VNAV NA when using Camarillo altimeter setting. For uncompensated Baro-VNAV systems, LNAV/VNAV NA below -15°C or above 43°C. When local altimeter setting not received, use Camarillo altimeter setting and increase LPV DA to 440 feet, LNAV/VNAV DA to 437 feet. Increase all MDAs 20 feet and Circling Cat C visibility ¼ SM.

MALSF

MISSED APPROACH: Climb to 2000 direct PEWKI and on track 239° to SQUID and hold.

ATIS 118.05	POINT MUGU APP CON* 124.7 335.5	OXNARD TOWER* 134.95 (CTAF) 257.8	GND CON 121.9
-----------------------	---	---	-------------------------



ELEV 45	D	TDZE 44
REIL Rwy 7		MIRL Rwy 7-25
5953 X 100	TWR 117	112
256°		
2000	PEWKI	SQUID
tr 239°		
1.3 NM to RW25	CUKUM 5.1 NM to RW25	NELLY HUPLA CUDAK
1720	3200	3700 4200
1.3 NM	3.8 NM	4.6 NM 3 NM 3.4 NM
CATEGORY	A	B C D
LPV DA	424-1	380 (400-1)
LNAV/VNAV DA	421-1	377 (400-1)
LNAV MDA	520-1 476 (500-1)	520-1⅓ 476 (500-1⅓)
CIRCLING	520-1 475 (500-1)	700-1¾ 760-2¼ 655 (700-1¾) 715 (800-2¼)