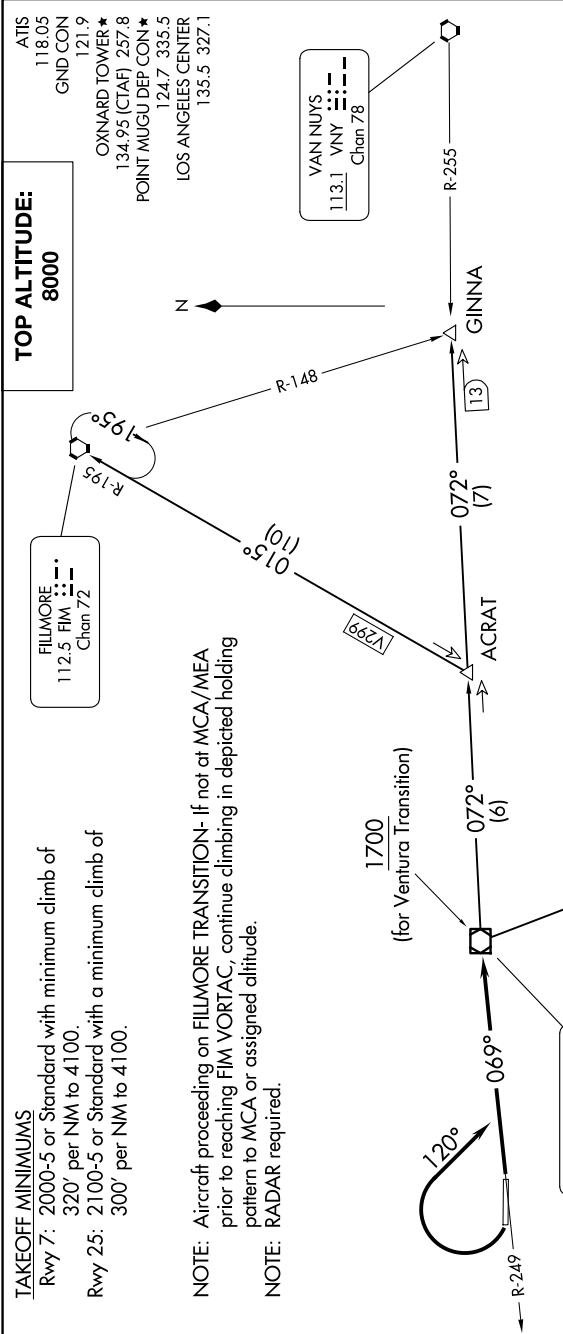


CAMARILLO SIX DEPARTURE

SW-3, 07 AUG 2025 to 04 SEP 2025



**DEPARTURE ROUTE DESCRIPTION**

**TAKEOFF RUNWAY 7:** Climb to 8000 (or assigned altitude) on CMA R-249 to CMA VOR/DME, thence. . . .

**TAKEOFF RUNWAY 25:** Climbing right turn to 8000 (or assigned altitude) on heading 120° to intercept CMA R-249 to CMA VOR/DME, thence. . . . on (assigned route) or (transition).

**FILLMORE TRANSITION (CMA6.FIM):** From over CMA VOR/DME via CMA R-072 to ACRAT INT then via FIM R-195 to FIM VORTAC.

**GINNA TRANSITION (CMA6.GINNA):** From over CMA VOR/DME via CMA R-072 to GINNA INT.

**VENTURA TRANSITION (CMA6.VTU):** From over CMA VOR/DME via VTU R-324 to VTU VOR/DME.

SW-3, 07 AUG 2025 to 04 SEP 2025

CAMARILLO SIX DEPARTURE

NOTE: Chart not to scale.