

APP CRS
305°

Rwy Ldg
TDZE
325

Apt Elev
328

RNAV (GPS) RWY 30

FLOYD BENNETT MEML (GFL)

RNP APCH.

⚠

⚠

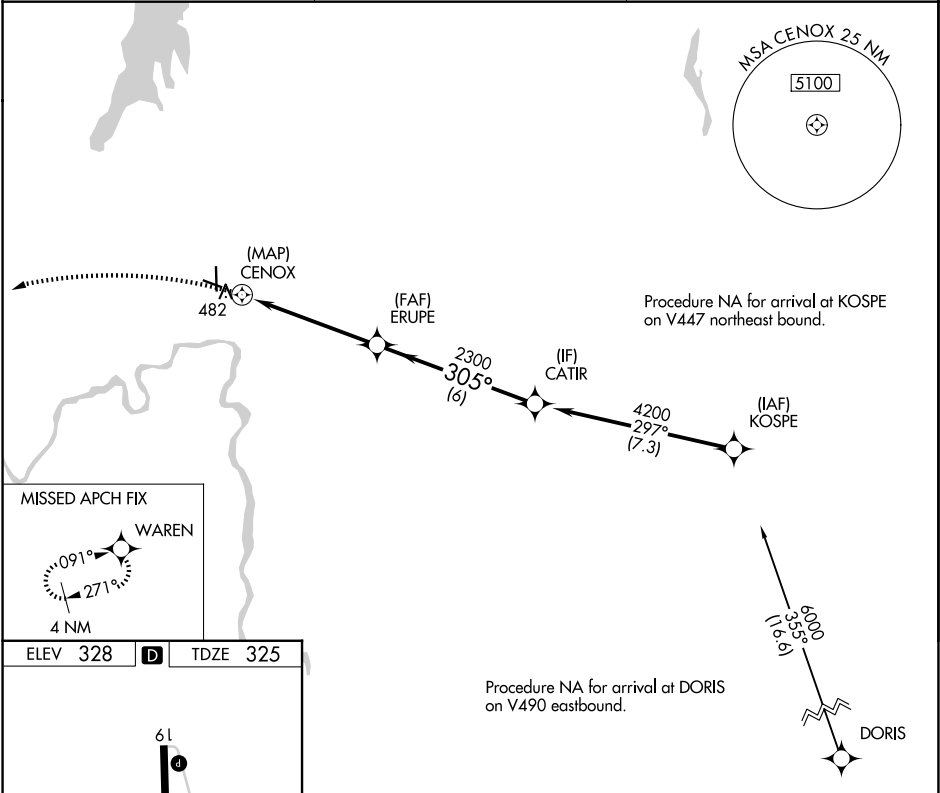
❄

Circling Rwy 12 NA at night.

Rwy 30 helicopter visibility reduction below ¾ SM NA.

MISSED APPROACH: Climbing left turn to 4000 direct WARREN and hold.

ASOS 119.925	ALBANY APP CON 132.825 307.2	UNICOM 123.0 (CTAF) 0
------------------------	--	---------------------------------



4000 WARREN

Visual Segment - Obstacles.

CENOX

1.2 NM to CENOX

ERUPE

CATIR

2300

4200

305°

0.8

1.2 NM

4 NM

6 NM

CATEGORY	A	B	C	D
LNAV MDA	1020-1	695 (700-1)	1020-2 695 (700-2)	1020-2½ 695 (700-2¼)
CIRCLING	1020-1	692 (700-1)	1020-2 692 (700-2)	1960-3 1632 (1700-3)

NE-2, 07 AUG 2025 to 04 SEP 2025

NE-2, 07 AUG 2025 to 04 SEP 2025