

WAAS CH 87118 W01A	APP CRS 012°	Rwy Ldg TDZE Apt Elev	5000 324 328
--	------------------------	-----------------------------	---

RNAV (GPS) RWY 1

FLOYD BENNETT MEML (GFL)

For uncompensated Baro-VNAV systems, LNAV/VNAV NA below -18°C (0°F) or above 54°C (130°F). DME/DME RNP-0.3 NA. When local altimeter setting not received use Albany altimeter setting and increase all DA 91 feet and all MDA 100 feet; increase LNAV/VNAV all Cats ¾ SM, LNAV Cat C/D and Circling Cat C visibility ¼ SM. For inoperative ALS when using Albany altimeter setting, increase LPV all Cats visibility to ¾ SM. Baro-VNAV and VDP NA when using Albany altimeter setting. Circling Rwy 12, 30 NA at night. Rwy 12, 30 helicopter visibility reduction below 1 SM NA.

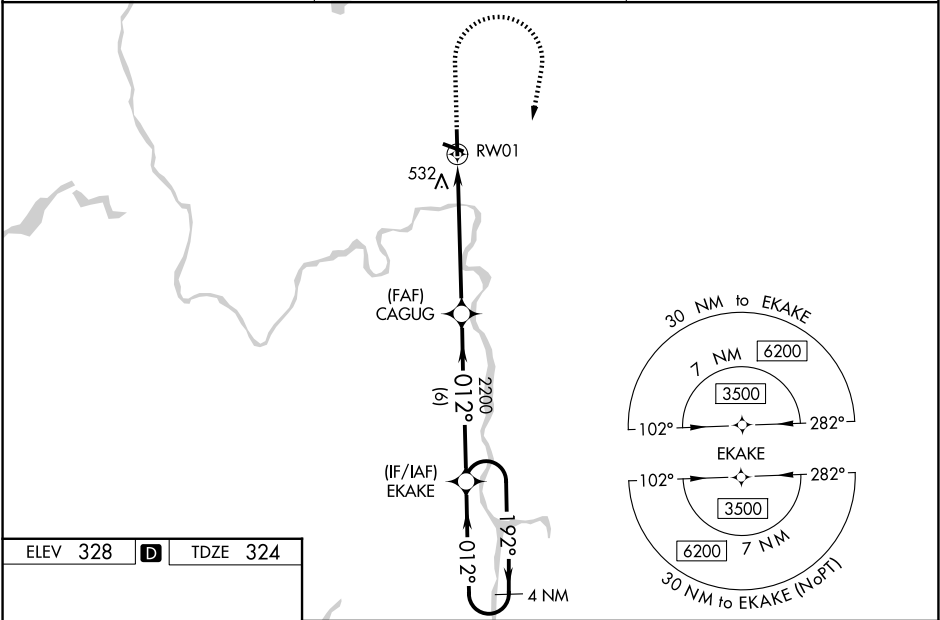
MALSRL

MISSED APPROACH:

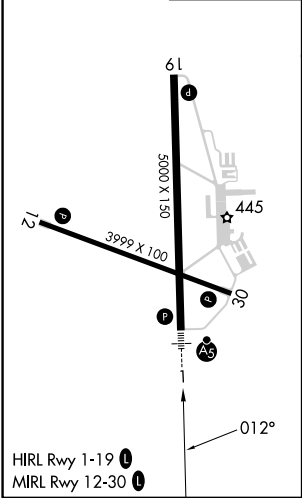
Climb to 900 then climbing right turn to 3500 direct EKAKE and hold.

-18°C

ASOS 119.925	ALBANY APP CON 132.825 307.2	UNICOM 123.0 (CTAF) 0
------------------------	--	---------------------------------



ELEV 328	D	TDZE 324
----------	----------	----------



900 ↑	3500 ↗	EKAKE ✦	4 NM Holding Pattern			
*LNAV only.						