

WAAS CH 86999 W02A	APP CRS 016°	Rwy Idg 5600 TDZE 7 Apt Elev 13
--	------------------------	--

RNAV (GPS) RWY 2
TWEED/NEW HAVEN (HVN)

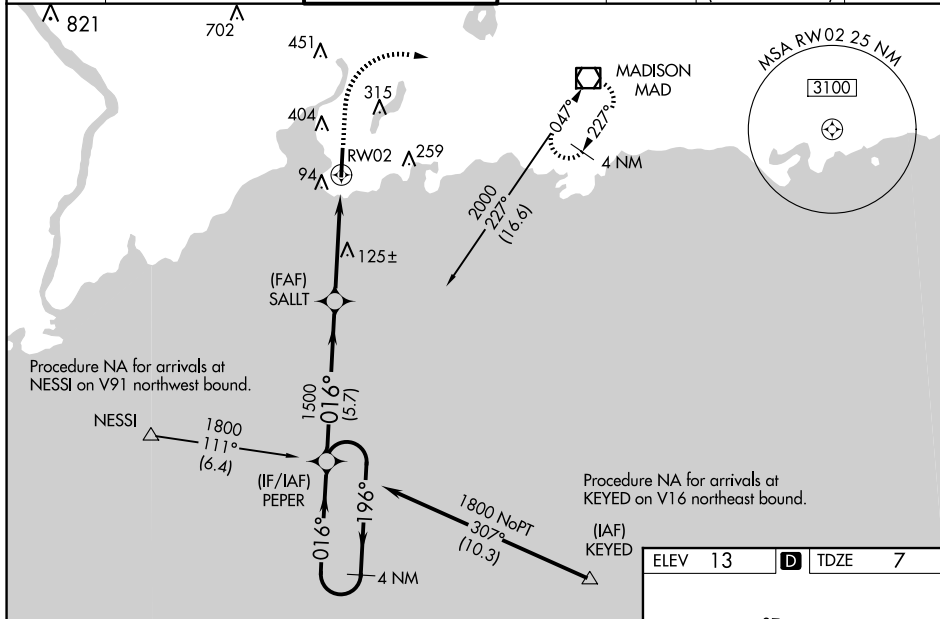
RNP APCH - GPS.

⚠ When local altimeter setting not received, use Long Island Mac Arthur altimeter setting; increase LPV DA to 375 feet; increase UNAV/VNAV DA to 446 feet and all visibilities to RVR 5000; increase all MDAs 100 feet and UNAV visibility Cat C/D to RVR 6000 and Circling visibility Cat C/D $\frac{1}{4}$ SM. For inop ALS when using Long Island Mac Arthur altimeter setting, increase LPV visibility all Cts to RVR 5500. For uncompensated Baro-VNAV systems, UNAV/VNAV NA below -14°C or above 54°C. Night landing: Rwy 14, 32 NA. Rwy 2 helicopter visibility reduction below RVR 4000 NA. Baro-VNAV and VDP NA when using Long Island Mac Arthur altimeter setting. For inop ALS, increase LPV all Cts visibility to RVR 4500.

MALSI

MISSED APPROACH:
Climb to 600 then
climbing right turn to
2000 direct MAD
VOR/DME and hold.

ATIS 133.65	NEW YORK APP CON 124.075 343.65	NEW HAVEN TOWER ★ 124.8 (CTAF) 0	GND CON 121.7	CLNC DEL 121.7	CLNC DEL 121.7 (When twr closed)	UNICOM 122.95
-----------------------	---	--	-------------------------	--------------------------	---	-------------------------



4 NM Holding Pattern

PEPER

1800 ← 196°
016° →

GP 3.00°
TCH 50

1500

SALT
1500

1.1 NM
to RW02

RW02

5.7 NM

3.4 NM

1.1 NM

600 ↑

2000 ↗

MAD □

