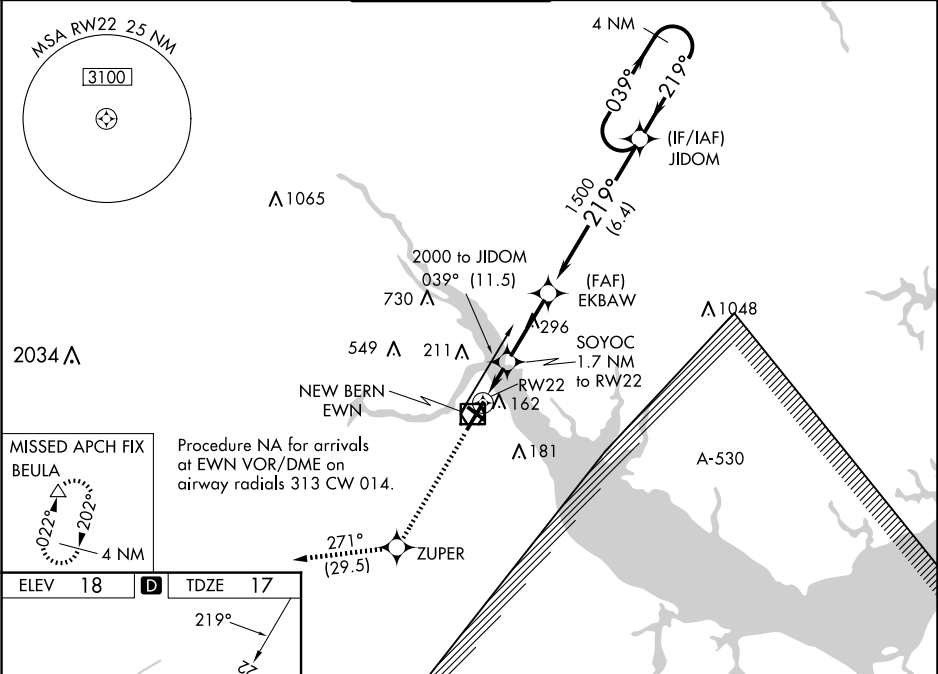


WAAS CH <b>63002</b> <b>W22A</b>	APP CRS <b>219°</b>	Rwy Idg <b>6153</b> TDZE <b>17</b> Apt Elev <b>18</b>
--	------------------------	---

RNAV (GPS) RWY 22

COASTAL CAROLINA RGNL (E'W'N)

RNP APCH.		MISSED APPROACH: Climb to 3000 direct ZUPER and on track 271° to BEULA and hold.		
Rwy 14, 32 helicopter visibility reduction below 1 SM NA. Rwy 22 helicopter visibility reduction below ¾ SM NA. Circling Rwy 14, 32 NA at night. Baro-VNAV NA when using Cherry Point altimeter setting. For uncompensated Baro-VNAV systems, LNAV/VNAV NA below -15°C (5°F) or above 54°C (130°F). When local altimeter setting not received, use Cherry Point altimeter setting; increase all DA 32 feet and all MDA 40 feet. Increase LPV and LNAV/VNAV visibility ½ SM, and Circling Cat C/D visibility ¼ SM.				
ASOS <b>118.525</b>	CHERRY POINT APP CON <b>119.35 374.9</b>	NEW BERN TOWER ★ <b>124.25</b> (CTAF) <b>0</b>	GND CON <b>121.7</b>	CLNC DEL <b>121.7</b>
			CLNC DEL <b>120.525</b> (when twr closed)	



MIRL Rwy 14-32  
HIRL Rwy 4-22  
REIL Rws 4, 22, 14 and 32

4 NM Holding Pattern

039° → 2000

← 219°

GP 3.00° TCH 31

JIDOM

EKBAW 1500

SOYOC 1.7 NM to RW22

\*580

1.7 NM 2.9 NM 6.4 NM

CATEGORY	A	B	C	D
LPV DA	269-7/8		252 (300-7/8)	
LNAV/VNAV DA	376-1 1/4		359 (400-1 1/4)	
LNAV MDA	480-1 463 (500-1)		480-1 3/8 463 (500-1 3/8)	
CIRCLING	480-1	520-1	600-1 1/2	860-2 3/4
	462 (500-1)	502 (600-1)	582 (600-1 1/2)	842 (900-2 3/4)

3000

ZUPER

tr 271°

BEULA

\*LNAV only.