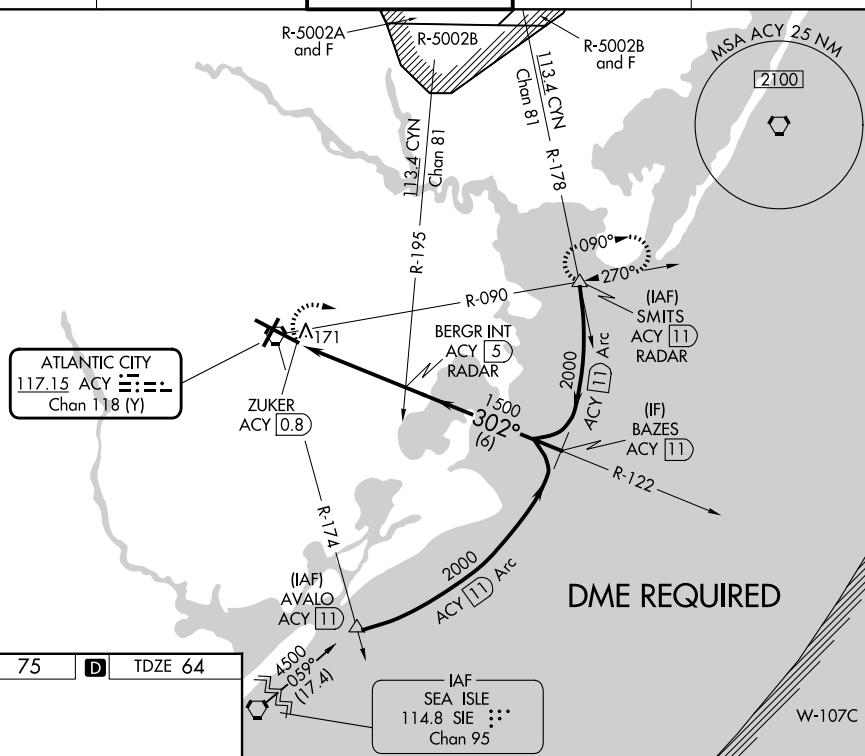


VOR RWY 31
ATLANTIC CITY INTL (ACY)

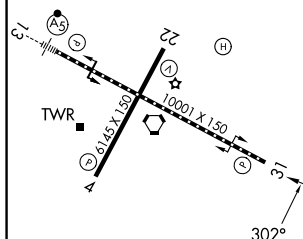


MISSED APPROACH: Climbing right turn to 2000 via heading 120° and ACY R-090 to SMITS INT/ACY 11 DME and hold.

ATIS	ATLANTIC CITY APP CON	ATLANTIC CITY TOWER	GND CON	CLNC DEL
125.725 316.15	124.6 327.125	120.3 239.0	121.9 284.6	127.85 353.775



ELEV	75	D	TDZE 64
------	----	----------	---------



TDZ/CL Rwy 13
HIRL Rwys 4-22 and 13-31
REIL Rwy 31

FAF to MAP 4.2 NM

Knots	60	90	120	150	180
Min:Sec	4:12	2:48	2:06	1:41	1:24

ATLANTIC CITY, NEW JERSEY

Amdt 1D 11JUL24

2000
hdg 120°
ACY R-090
SMITS
VGS1 and descent angles not coincident (VGS1 Angle 3.00/TCH 69°).
ZUKER ACY (0.8)
ACY (1.9)
BERGR INT ACY (5) RADAR
BAZES ACY (11)
2000
302°
1500
3.12°
TCH 52
1.1 NM
3.1 NM
6 NM
Procedure Turn NA

CATEGORY	A	B	C	D	E
S-31	480/55	416 (500-1)	480/60	416 (500-1¼)	480-1½ 416 (500-1½)
CIRCLING	540-1 465 (500-1)	600-1 525 (600-1)	620-1½ 545 (600-1½)	640-2 565 (600-2)	760-2½ 685 (700-2½)

ATLANTIC CITY INTL (ACY)
VOR RWY 31

NE-2, 07 AUG 2025 to 04 SEP 2025