

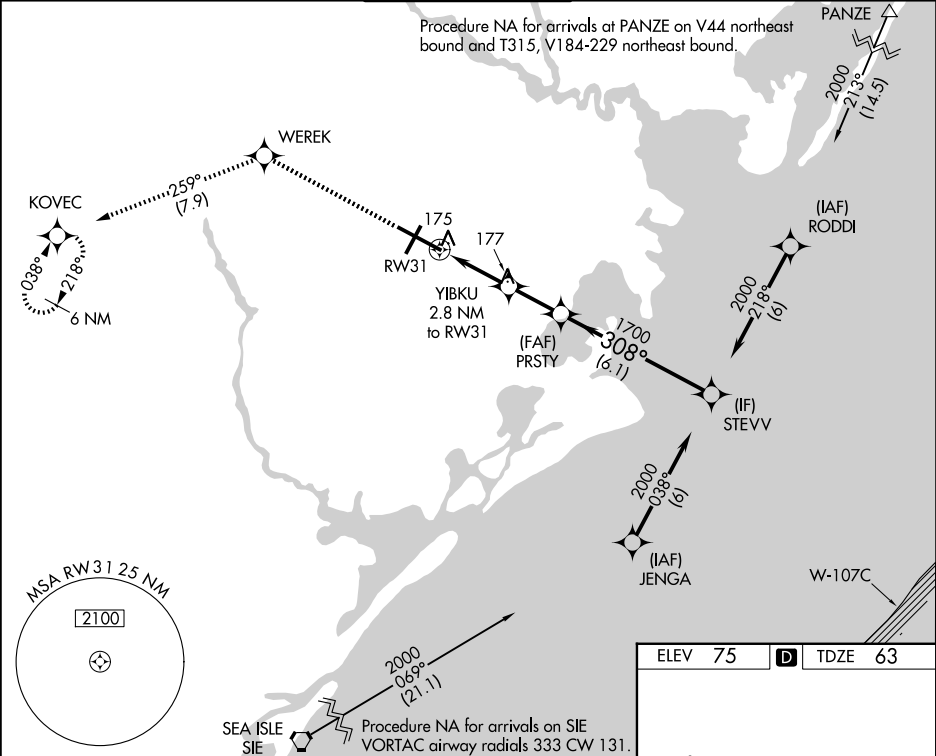
WAAS CH 50113 W31A	APP CRS 308°	Rwy Ldg TDZE Apt Elev	10001 63 75
--	------------------------	-----------------------------	--

RNAV (GPS) Y RWY 31

ATLANTIC CITY INTL (ACY)

RNP APCH - GPS.	MISSED APPROACH: Climb to 2000 direct WEREK and on track 259° to KOVEC and hold.
<div><div>▼</div><div>▲</div></div> For uncompensated Baro-VNAV systems, LNAV/VNAV NA below -15°C or above 54°C.	

ATIS 125.725 316.15	ATLANTIC CITY APP CON 124.6 327.125	ATLANTIC CITY TOWER 120.3 239.0	GND CON 121.9 284.6	CLNC DEL 127.85 353.775
-------------------------------	---	---	-------------------------------	-----------------------------------



2000	WEREK	tr 259°	KOVEC	VGSI and RNAV glidepath not coincident (VGSI Angle 3.00/TCH 69°)	STEVR	2000
				PRSTY 1700		
			1 NM to RW31	YIBKU 2.8 NM to RW31		
					1000	1700
			1 NM	1.8 NM	2.1 NM	6.1 NM
CATEGORY	A	B	C	D	E	
LPV DA		263/40	200 (200-¾)			
LNAV/VNAV DA		440/55	377 (400-1)			
LNAV MDA		440/55	377 (400-1)			
CIRCLING	540-1 465 (500-1)	600-1 525 (600-1)	620-1½ 545 (600-1½)	640-2 565 (600-2)	760-2½ 685 (700-2½)	

