

APP CRS	Rwy Ldg	10001
128°	TDZE	75
	Apt Elev	75

RNAV (RNP) Z RWY 13

ATLANTIC CITY INTL (ACY)

▼

NA

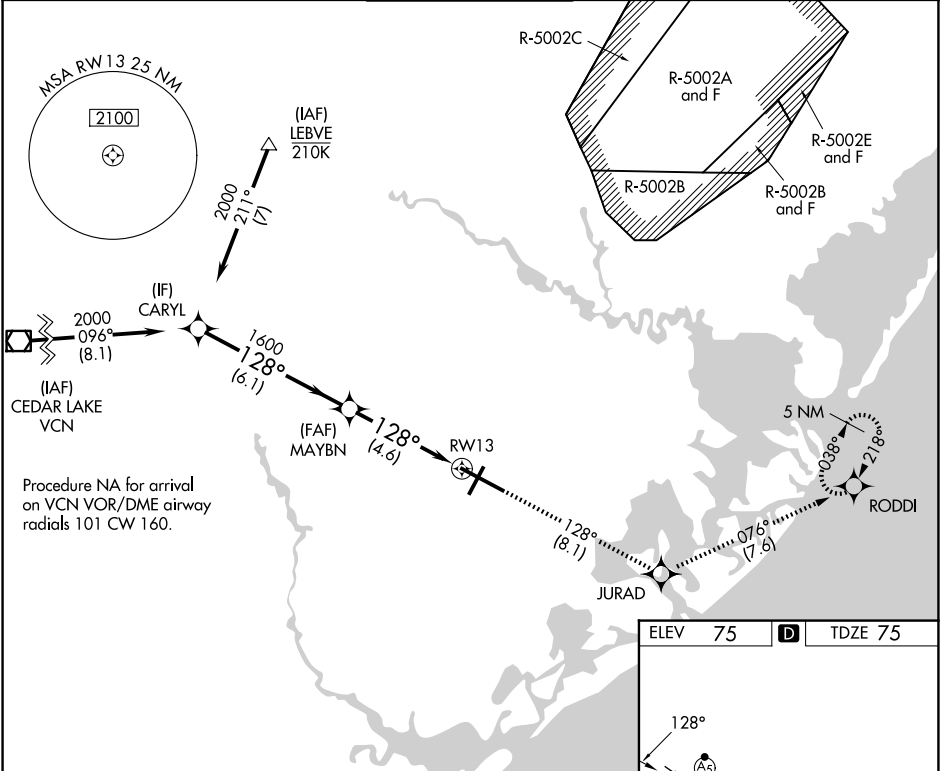
For uncompensated Baro-VNAV systems, procedure NA below -13°C (9°F) or above 54°C (130°F). GPS required.
For inop ALS, increase RNP 0.30 all Cats visibility to RVR 6000.

MALSR

AS

MISSED APPROACH: Climb to 2000 on track 128° to JURAD and on track 076° to RODDI and hold.

ATIS	ATLANTIC CITY APP CON	ATLANTIC CITY TOWER	GND CON	CLNC DEL
125.725 316.15	124.6 327.125	120.3 239.0	121.9 284.6	127.85 353.775



CARYL

2000

128°

MAYBN

1600

JURAD

tr 128°

RODDI

tr 076°

VGSI and RNAV glidepath not coincident (VGSI Angle 3.00/TCH 71).

GP 3.00°

TCH 58

6.1 NM

4.6 NM

RW13

CATEGORY	A	B	C	D
RNP 0.30 DA		442/40	367 (400-¾)	

AUTHORIZATION REQUIRED

ELEV 75

D

TDZE 75

128°

076°

TWR

61.45 X 150

1000 X 150

22

31

TDZ/CL Rwy 13

HIRL Rwy 4-22 and 13-31

REIL Rwy 31