

LOC/DME I-PVO	APP CRS	Rwy Ldg
<b>109.1</b>	<b>128°</b>	<b>10001</b>
Chan <b>28</b>		TDZE <b>75</b>
		Apt Elev <b>75</b>

ILS Z or LOC Z RWY 13

ATLANTIC CITY INTL (ACY)

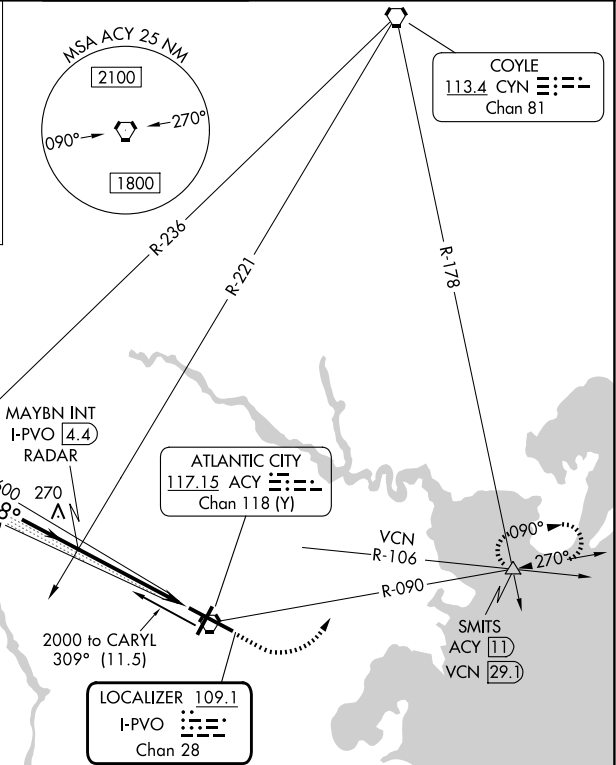
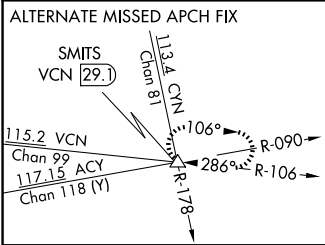
**⚠** For inop ALS, increase S-ILS 13 Cat E visibility to RVR 4000 and S-LOC 13 Cat E visibility to 1 3/8 SM.

**MALSR**

**AS**

**MISSED APPROACH:** Climb to 600 then climbing left turn to 2000 on ACY VORTAC R-090 to SMITS INT/ACY 11 DME and hold.

ATIS	ATLANTIC CITY APP CON	ATLANTIC CITY TOWER	GND CON	CLNC DEL
<b>125.725 316.15</b>	<b>124.6 327.125</b>	<b>120.3 239.0</b>	<b>121.9 284.6</b>	<b>127.85 353.775</b>



ELEV 75	<b>D</b>	TDZE 75
---------	----------	---------

TDZ/CL Rwy 13  
HIRL Rwys 4-22 and 13-31  
REIL Rwy 31

FAF to MAP 4.6 NM

Knots	60	90	120	150	180
Min:Sec	4:36	3:04	2:18	1:50	1:32

Use I-PVO DME when on the localizer course.

One Minute Holding Pattern	CARYL INT I-PVO 10.5	MAYBN INT I-PVO 4.4	VGSI and ILS glidepath not coincident (VGSI Angle 3.00/TCH 71).	600	2000	ACY R-090	SMITS
----------------------------	----------------------	---------------------	-----------------------------------------------------------------	-----	------	-----------	-------

GS 3.00° TCH 58

CATEGORY	A	B	C	D	E
S-ILS 13	275/18 200 (200-1/2)				
S-LOC 13	520/24 445 (500-1/2)	520/45 445 (500-2/3)	520/45 445 (500-2/3)	520/45 445 (500-2/3)	520/45 445 (500-2/3)
CIRCLING	540-1 465 (500-1)	600-1 525 (600-1)	620-1 545 (600-1 1/2)	640-2 565 (600-2)	760-2 1/2 685 (700-2 1/2)