

LOC/DME I-ACY	APP CRS	Rwy Ldg
<b>109.10</b>	<b>308°</b>	<b>10001</b>
Chan 28		TDZE
		<b>64</b>
		Apt Elev
		<b>75</b>

ILS or LOC/DME RWY 31

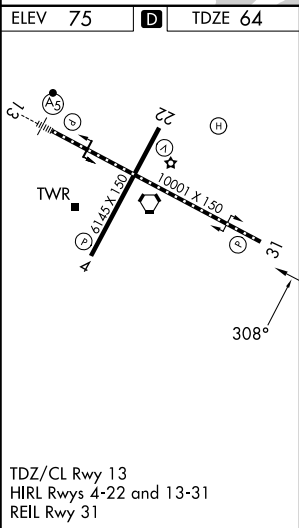
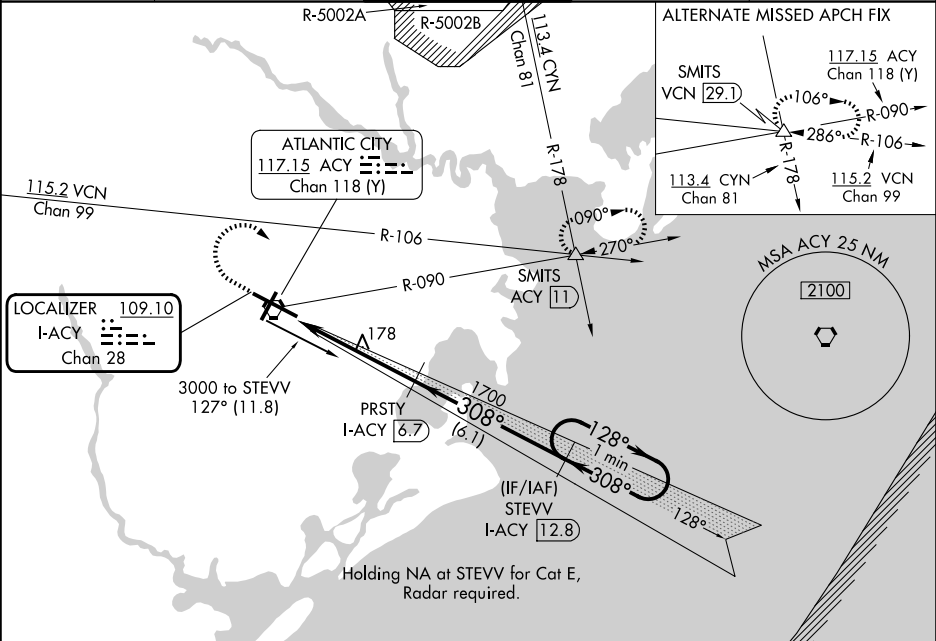
ATLANTIC CITY INTL (ACY)

⚠

⚠

MISSED APPROACH: Climb to 500 then climbing right turn to 2000 via heading 130° and via ACY R-090 to SMITS INT/ ACY 11 DME and hold.

ATIS	ATLANTIC CITY APP CON	ATLANTIC CITY TOWER	GND CON	CLNC DEL
<b>125.725 316.15</b>	<b>124.6 327.125</b>	<b>120.3 239.0</b>	<b>121.9 284.6</b>	<b>127.85 353.775</b>



DME REQUIRED					
500	2000	ACY R-090	SMITS △	Use I-ACY DME when on localizer course. VGSI and ILS glidepath not coincident (VGSI Angle 3.00/TCH 69).	
↑	hdg 130°			One Minute Holding Pattern	
CATEGORY	A	B	C	D	E
S-ILS 31	264/40 200 (200-¾)				
S-LOC 31	520/55	456 (500-1)	520-1½ 456 (500-1½)	520-1½	456 (500-1½)
CIRCLING	540-1 465 (500-1)	600-1 525 (600-1)	620-1½ 545 (600-1½)	640-2 565 (600-2)	760-2½ 685 (700-2½)