

HI-ILS Y or LOC Y RWY 13

LOC/DME I-PVO 109.1 Chan 28	APCH CRS 128°	Rwy Idg 10,001 TDZE 75 Arprt Elev 75
---	-------------------------	---

[USAF]

ATLANTIC CITY INTL (KACY)

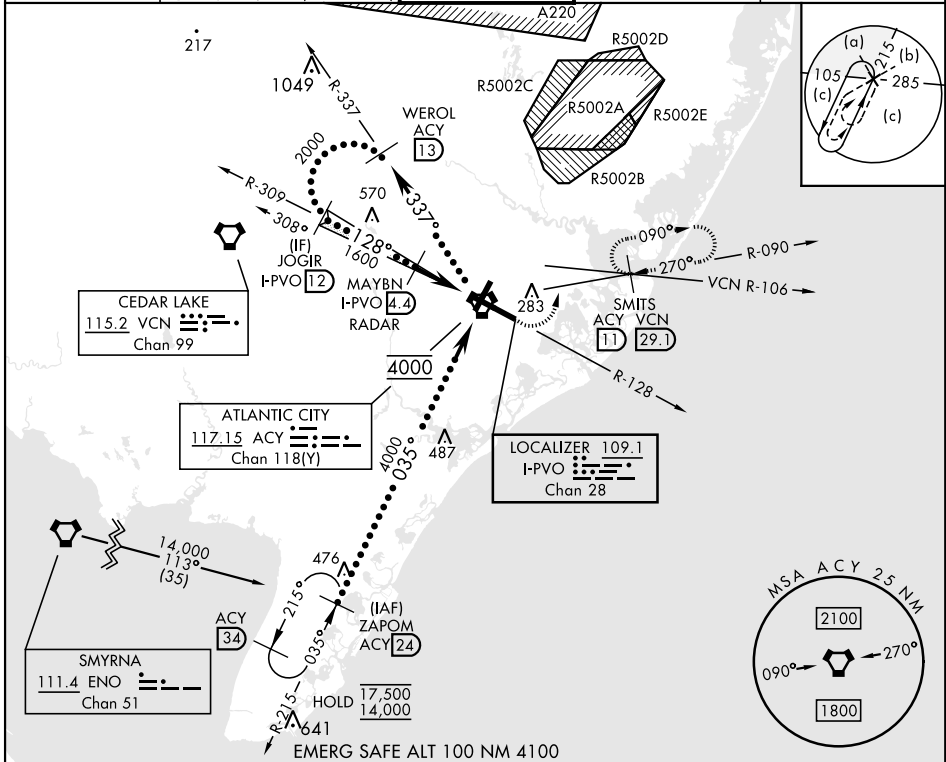
DME or RADAR required



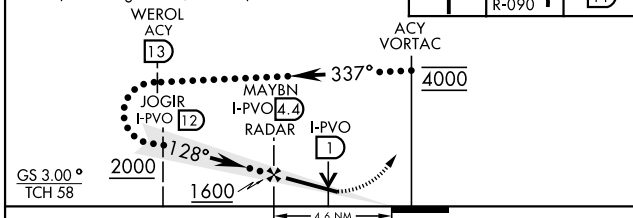
MISSED APPROACH: Climb to 600 then climbing left turn to 2000 on ACY R-090 to SMITS/ACY 11 DME and hold.

When ALS inop, increase RVR to 40 and vis to 3/4 mile.
When ALS inop, increase vis to 1 3/8 miles.

ATIS 125.725 316.15	APP CON 124.6 327.125 (130° - 309°) 134.25 292.2 (310° - 129°)	TOWER 120.3 239.0	GND CON 121.9 284.6	CLNC DEL 127.85 353.775
-------------------------------	--	-----------------------------	-------------------------------	-----------------------------------

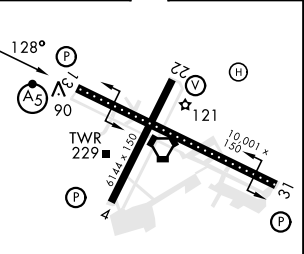


Use I-PVO DME when on the LOC course.
VGSI and ILS glidepath not coincident
(VGSI Angle 3.00/TCH 71).



CATEGORY	C	D	E
S-ILS 13 *	275/18	200	(200-1/2)
S-LOC 13 **	520/45	445	(500-7/8)
CIRCLING	620-1 1/2 545 (600-1 1/2)	640-2 565 (600-2)	760-2 1/2 685 (700-2 1/2)

ELEV	75	TDZE	75
------	----	------	----



REIL Rwy 31 HIRL Rwy 4-22 and 13-31 TDZL/CL Rwy 13	FAF to MAP 4.6 NM
Knots	120 140 160 180 200
Min:Sec	2:18 1:58 1:43 1:32 1:23

HI-ILS Y or LOC Y RWY 13