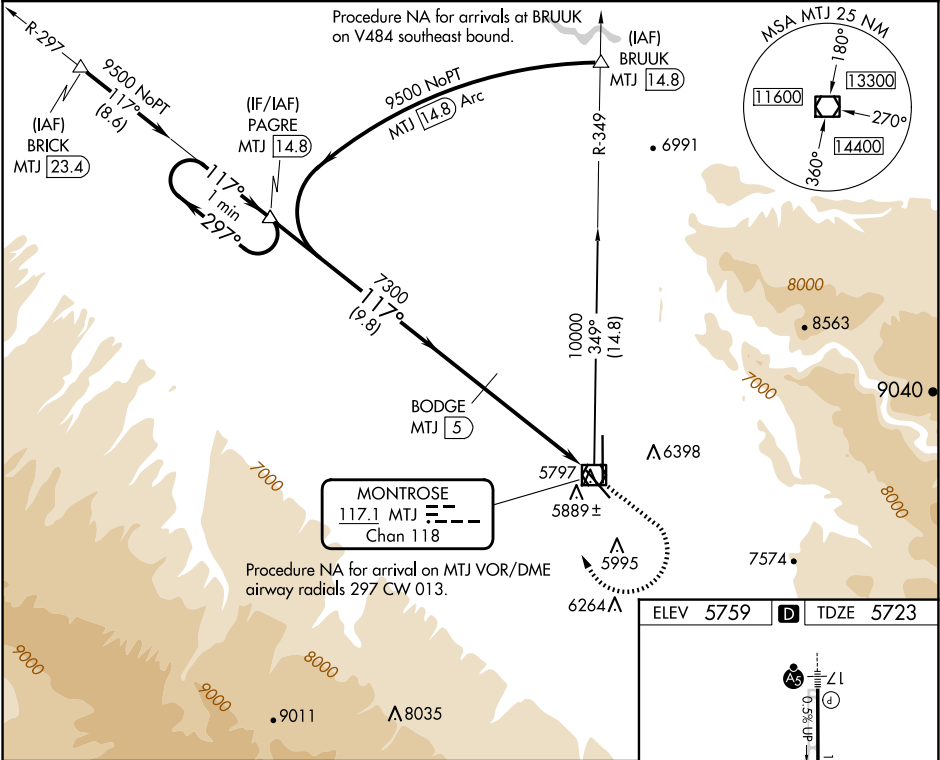


VOR/DME MTJ	APP CRS	Rwy Ldg	7510
117.1	117°	TDZE	5723
Chan 118		Apt Elev	5759

VOR RWY 13
 MONTROSE RGNL (MTJ)

DME required.	MISSED APPROACH: Climb to 6600 then climbing right turn to 9500 on MTJ VOR/DME R-297 to PAGRE/14.8 DME and hold.
<div> <div></div> <div> Straight-in Rwy 13 at night, operational VGSI required, remain on or above VGSI glidepath until threshold. Rwy 13 helicopter visibility reduction below 1 SM NA. Circling Rwy 31 NA at night. Circling NA east of Rwy 17 and northeast of Rwy 31. When local altimeter setting not received, use Delta altimeter setting: increase all MDAs 140 feet and visibility S-13 Cats C and D ½ SM and Circling Cat C ¼ SM. </div> </div>	

ASOS 135,225	DENVER CENTER 127.1 343.65	UNICOM 122.8 (CTAF)
-----------------	-------------------------------	------------------------



<div>One Minute Holding Pattern</div> <div><div>PAGRE MTJ 14.8</div><div>9500 ← 297° 117° →</div></div> <div><div>BODGE MTJ 5</div><div>117°</div><div>7300</div><div>3.14° ≥ TCH 42</div><div>MTJ VOR/DME</div></div> <div><div>6600</div><div>9500</div><div>PAGRE</div><div><div>↑</div><div>MTJ R-297</div><div>△</div></div></div>				
<div>9.8 NM</div> <div>4.7 NM 1/8</div>				
CATEGORY	A	B	C	D
S-13	6140-1 417 (400-1)		6140-1½ 417 (400-1½)	
CIRCLING	6280-1 521 (600-1)	6420-1 661 (700-1)	6640-2¾ 881 (900-2¾)	6800-3 1041 (1100-3)

