

WAAS CH <b>40411</b> <b>W17A</b>	APP CRS <b>168°</b>	Rwy Ldg <b>10000</b> TDZE <b>5708</b> Apt Elev <b>5759</b>
--	------------------------	--

RNAV (GPS) RWY 17  
MONTROSE RGNL (MTJ)

RNP APCH - GPS.

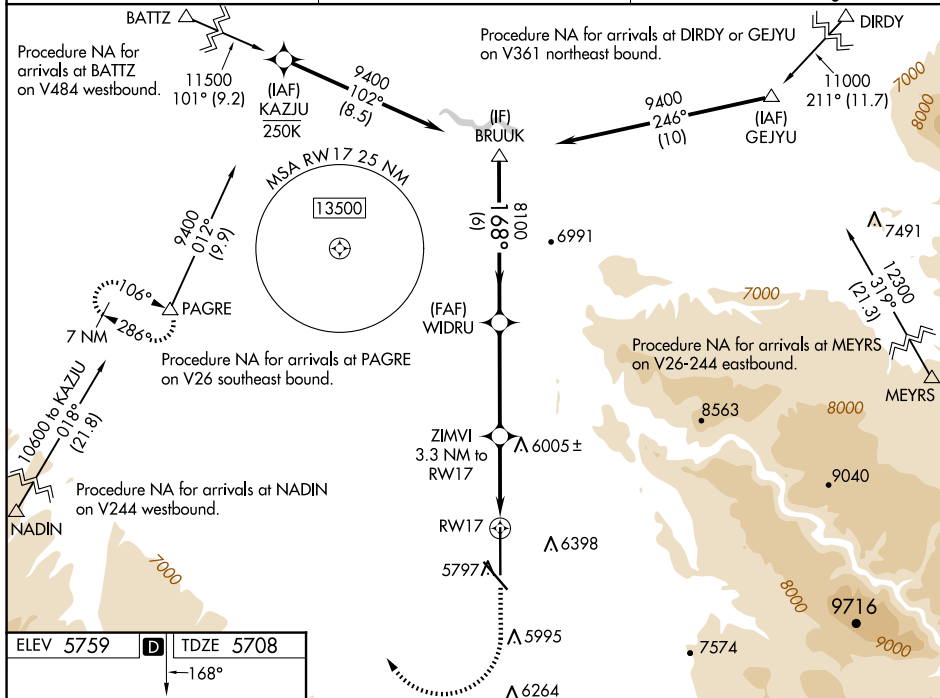
**T** Circling NA east of Rwy 17 and northeast of Rwy 31. Circling  
**A** Rwy 31 NA at night. When Circling to Rwy 13 at night,  
operational VGSI required, remain on or above VGSI glidepath  
until threshold. Baro-VNAV NA.

MALSR



**MISSED APPROACH:** (Do not exceed 250K until PAGRE) Climb to 6200 then climbing right turn to 11000 direct PAGRE and hold, continue climb in hold to 11000.

ASOS 135.225	DENVER CENTER 127.1 343.65	UNICOM 122.8 (CTAF) <b>L</b>
-----------------	-------------------------------	---------------------------------



CATEGORY	A	B	C	D
LPV DA	5908-½	200 (200-½)		
LNAV/VNAV DA	6136-¾	428 (400-¾)		
LNAV MDA	6160-½	452 (500-½)	6160-¾	452 (500-¾)
CIRCLING	6280-1 521 (600-1)	6320-1 561 (600-1)	6420-1¾ 661 (700-1¾)	6800-3 1041 (1100-3)

MONTROSE, COLORADO

Amdt 1A 12JUN25

38°31'N-107°54'W

MONTROSE RGNL (MTJ)

RNAV (GPS) RWY 17

SW-1, 07 AUG 2025 to 04 SEP 2025