

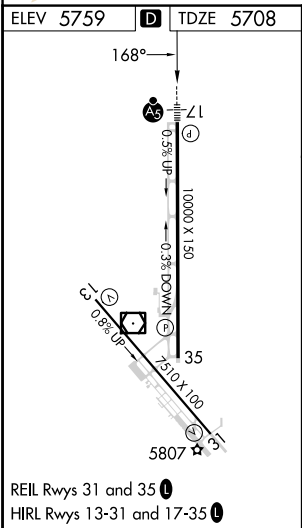
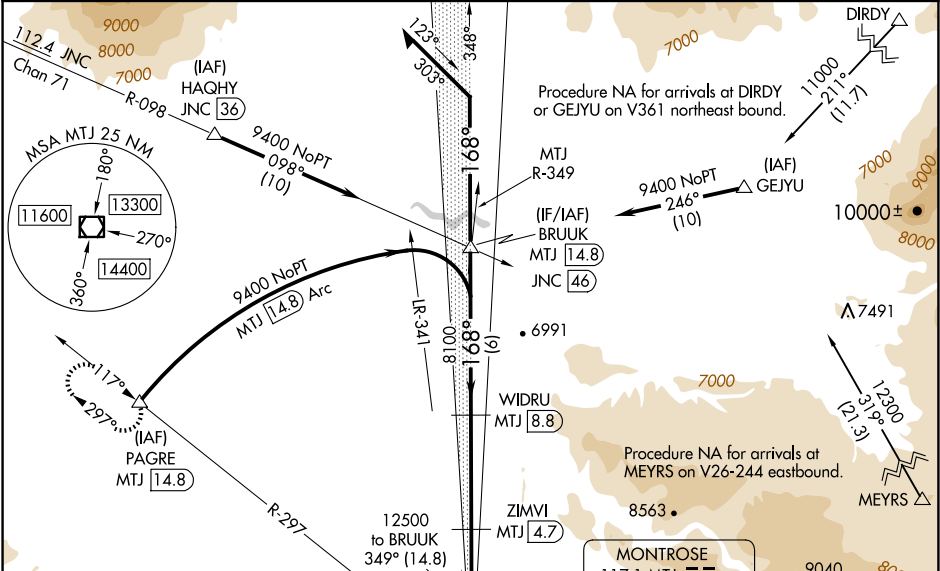
LOC I-MTJ	APP CRS	Rwy Ldg	10000
111.3	168°	TDZE	5708
		Apt Elev	5759

ILS or LOC RWY 17 MONTROSE RGNL (MTJ)

RNP APCH - GPS. From DIRDY, MYERS, GEJYU.	<div>MALSR</div> <div> </div>	MISSED APPROACH: Climb to 6300 then climbing right turn to 11000 on heading 325° and MTJ VOR/DME R-297 to PAGRE/ MTJ 14.8 DME and hold, continue climb-in-hold to 11000.
DME required.		

Circling NA east of Rwy 17 and northeast of Rwy 31. Circling Rwy 31 NA at night. When Circling Rwy 13 at night, operational VGSJ required, remain on or above VGSJ glidepath until threshold. DME from MTJ VOR/DME. DME use requires simultaneous reception of I-MTJ and MTJ. For inop ALS, increase S-LOC 17 Cat C/D visibility to 7/5 SM.

ASOS	DENVER CENTER	UNICOM
135,225	127.1 343.65	122.8 (CTAF) 0



ELEV 5759	TDZE 5708
168°	168°
10000 X 1.50	10000 X 1.50
0.5% UP	0.5% UP
0.3% DOWN	0.3% DOWN
0.9% UP	0.9% UP
35	35
5807	5807
REIL Rwy 31 and 35	REIL Rwy 31 and 35
HIRL Rwy 13-31 and 17-35	HIRL Rwy 13-31 and 17-35
CIRCLING	CIRCLING
6280-1	6280-1
521 (600-1)	521 (600-1)
6320-1	6320-1
561 (600-1)	561 (600-1)
6420-1 3/4	6420-1 3/4
661 (700-1 3/4)	661 (700-1 3/4)
6800-3	6800-3
1041 (1100-3)	1041 (1100-3)