

LOC I-MCW  
**109.5**

APP CRS  
**360°**

Rwy Ldg  
TDZE **1193**  
Apt Elev **1213**

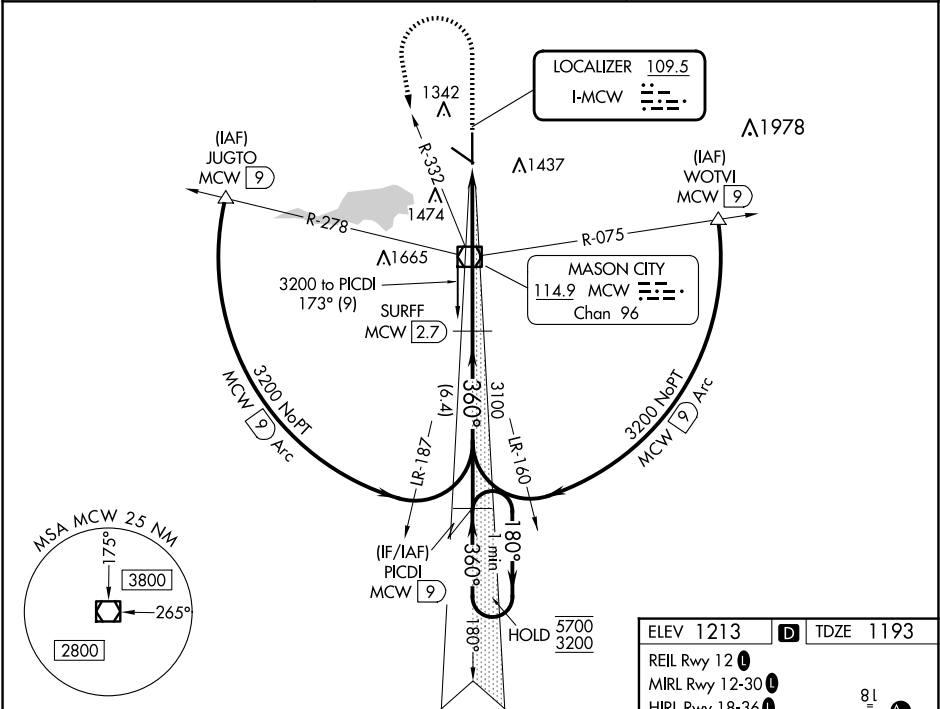
ILS or LOC RWY 36  
MASON CITY MUNI (MCW)

DME required.  
For inoperative ALS, increase S-LOC 36 Cats C and D visibility to 1¾ SM. DME from MCW VOR/DME. DME use requires simultaneous reception of I-MCW and MCW DME.

MALSR  
AS

MISSED APPROACH: Climb to 2900 then climbing left turn to 3200 on heading 170° and MCW R-332 to MCW VOR/DME and on MCW R-173 to PICDI/MCW VOR/DME 9 DME and hold.

ASOS <b>120.3</b>	MINNEAPOLIS CENTER <b>127.3 257.675</b>	UNICOM <b>123.0</b> (CTAF) <b>0</b>
----------------------	--	--



2900  
3200  
hdg 170°

MCW R-332

MCW R-173

PICDI MCW 9

VGSI and ILS glidepath not coincident (VGSI Angle 2.90/TCH 62).

One Minute Holding Pattern

MCW VOR/DME

SURFF MCW 2.7

MCW 3.4

MCW 1.6

3100

360°

180°

5700

3200

GS 2.90°

TCH 58

1.8 NM

4.3 NM

6.4 NM

CATEGORY

A

B

C

D

S-ILS 36

1393-½

200 (200-½)

S-LOC 36

1800-½

607 (600-½)

1800-1¾

607 (600-1¾)

CIRCLING

1800-1

587 (600-1)

1800-1¾

587 (600-1¾)

1800-2

587 (600-2)

ELEV 1213

TDZE 1193

REIL Rwy 12

MIRL Rwy 12-30

HIRL Rwy 18-36

81

6501 X 150

0.3% Up

0.3% Up

36

360°