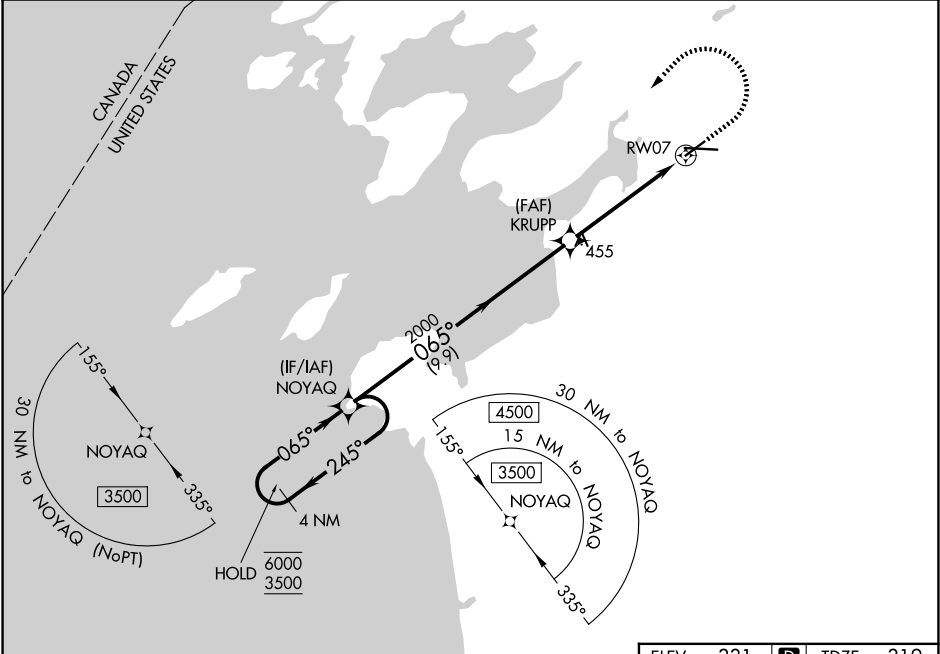


WAAS CH 82510 W07A	APP CRS 065°	Rwy Ldg TDZE Apt Elev	4784 319 331
--	------------------------	-----------------------------	---

RNAV (GPS) RWY 7
WATERTOWN INTL (ART)

RNP APCH - GPS. <div><div></div><div>For uncompensated Baro-VNAV systems, LNAV/VNAV NA below -20°C or above 54°C. For inop ALS, increase LNAV/VNAV visibilities all Cats to 1½ SM and LNAV Cat C/D visibilities to 1½ SM.</div></div>			MALSRL <div><div></div><div></div></div>	MISSED APPROACH: Climb to 900 then climbing left turn to 3500 direct NOYAQ and hold.	
ASOS 132.325	KGTB ATIS 119.525	WHEELER-SACK APP CON 124.875 307.125	CLNC DEL 120.8	UNICOM 123.0 (CTAF) <div></div>	



4 NM Holding Pattern		ELEV 331		TDZE 319	
<div><div>6000</div><div>3500</div><div>GP 3.00°</div><div>TCH 55</div></div>		<div><div>900</div><div>3500</div><div>NOYAQ</div></div>			
<div><div>NOYAQ</div><div>245°</div><div>065°</div><div>065°</div><div>2000</div><div>9.9 NM</div><div>3.8 NM</div><div>1.4 NM</div><div>RW07</div></div>		<div><div>01</div><div>0.3% UP</div><div>1999 X 150</div><div>7001 X 150</div><div>281</div><div>065°</div></div>			
CATEGORY	A	B	C	D	
LPV DA	519-½ 200 (200-½)				
LNAV/VNAV DA	800-1 481 (500-1)				
LNAV MDA	800-½	481 (500-½)	800-1	481 (500-1)	
CIRCLING	960-1	629 (700-1)	980-1¾ 649 (700-1¾)	1080-2½ 749 (800-2½)	