

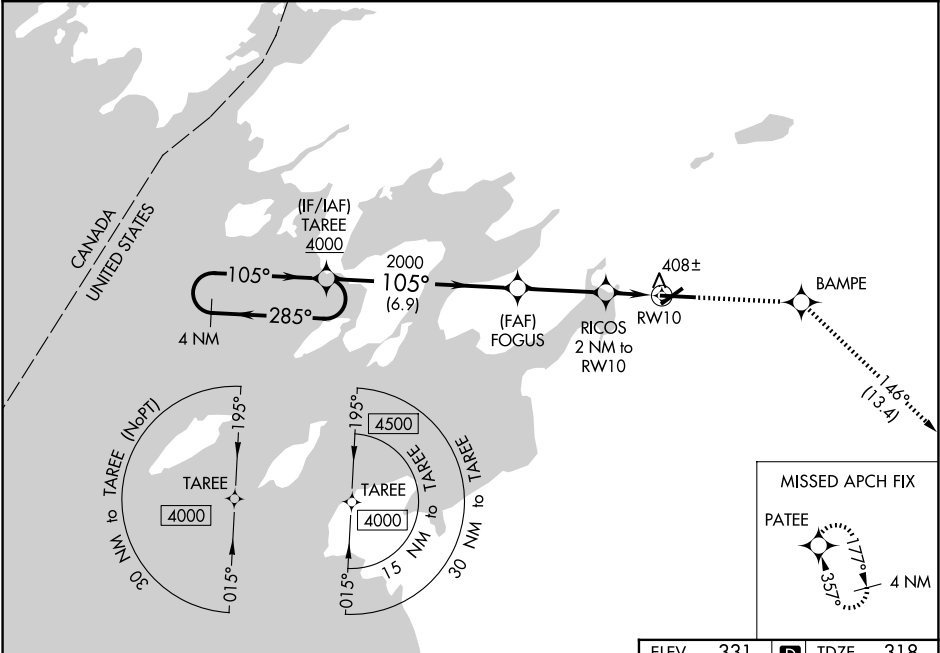
WAAS CH 53522 W10A	APP CRS 105°	Rwy Ldg TDZE Apt Elev	7001 318 331
--	------------------------	-----------------------------	---

RNAV (GPS) RWY 10

WATERTOWN INTL (ART)

RNP APCH.	MISSED APPROACH: Climb to 3600 direct BAMPE and on track 146° to PATEE and hold.
<div><div>T</div><div>A</div></div> <div>For uncompensated Baro-VNAV systems, LNAV/VNAV NA below -20°C or above 54°C. Rwy 10 helicopter visibility reduction below ¾ SM NA.</div>	

ASOS 132.325	KGTB ATIS 119.525	WHEELER-SACK APP CON 124.875 307.125	CLNC DEL 120.8	UNICOM 123.0 (CTAF) 0
------------------------	-----------------------------	--	--------------------------	---------------------------------



4 NM Holding Pattern		3600	BAMPE	tr 146°	PATEE
4000		2000	RICOS 2 NM to RW10	*1 NM to RW10	RW10
GP 3.00° TCH 47		*980	*LNAV only.		
6.9 NM		3.2 NM	1 NM	1 NM	
CATEGORY	A	B	C	D	
LPV DA		568-¾	250 (300-¾)		
LNAV/VNAV DA		578-¾	260 (300-¾)		
LNAV MDA		660-1	342 (400-1)		
CIRCLING	960-1	629 (700-1)	980-1¾ 649 (700-1¾)	1080-2½ 749 (800-2½)	
REIL Rwy 25 0 HIRL Rwy 7-25 0 MIRL Rwy 10-28 0					