


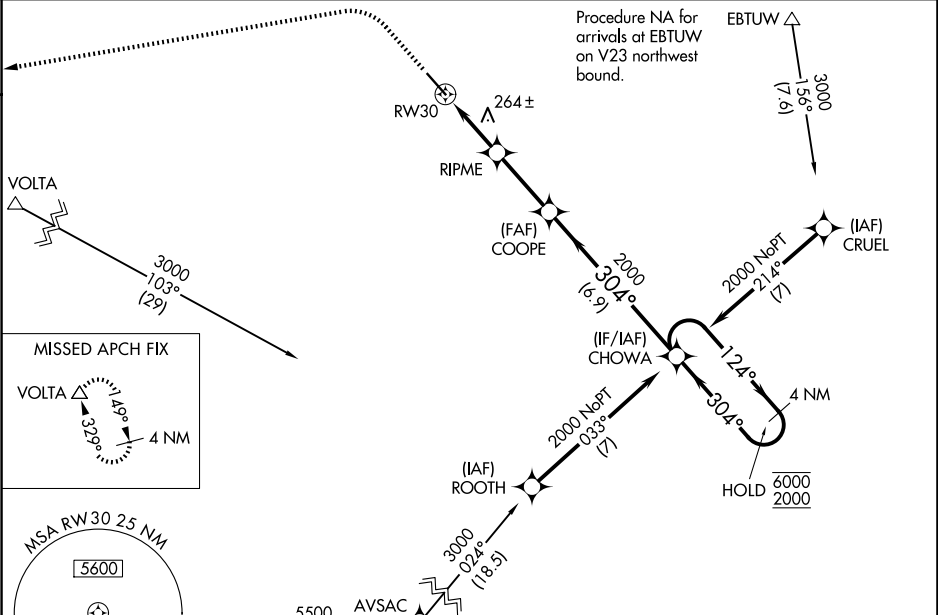
WAAS CH <b>93709</b> <b>W30A</b>	APP CRS <b>304°</b>	Rwy Ldg TDZE <b>155</b> Apt Elev <b>155</b>
--	------------------------	---

RNAV (GPS) RWY 30

MERCED YOSEMITE RGNL (MCE)

RNP APCH. ▼ For uncompensated Baro-VNAV systems, LNAV/VNAV NA below -3°C or above 54°C. For inoperative ALS, increase LNAV Cats C/D visibility to 1 3⁄8 SM. Circling NA northeast of Rwy 12-30.	MALSR 	MISSED APPROACH: Climb to 1000 then climbing left turn to 3000 direct VOLTA and hold.
--	--	---

ASOS <b>132.175</b>	NORCAL APP CON <b>120.95 269.45</b>	UNICOM <b>122.7 (CTAF) 0</b>
------------------------	--	---------------------------------



ELEV 155		TDZE 155	
1000 3000 VOLTA		RWY 30 228	
*LNAV only		GP 3.00° TCH 53	
RWY 30		304°	
1 NM		1.8 NM	
2.8 NM		6.9 NM	
CATEGORY	A	B	C
LPV DA	355-1⁄2	200 (200-1⁄2)	
LNAV/VNAV DA	544-5⁄8	389 (400-5⁄8)	
LNAV MDA	520-1⁄2 365 (400-1⁄2)	520-5⁄8 365 (400-5⁄8)	
CIRCLING	560-1 405 (500-1)	620-1 465 (500-1)	620-1 565 (600-2)