

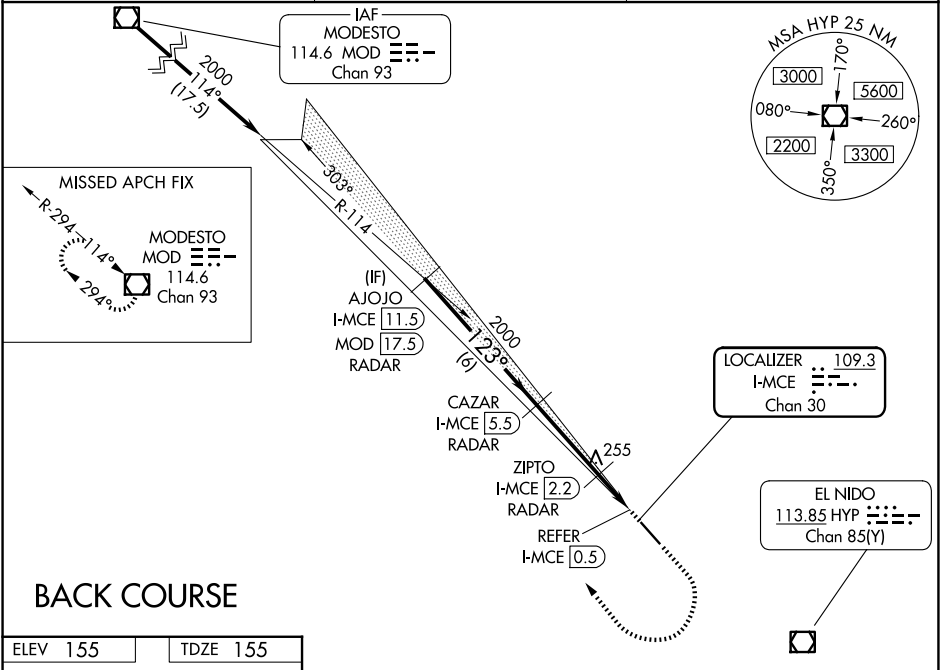
LOC/DME I-MCE 109.3 Chan 30	APP CRS 123°	Rwy Ldg TDZE 155 Apt Elev 155
---	------------------------	---

LOC BC RWY 12

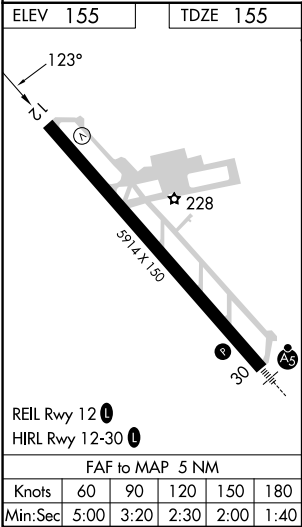
MERCED YOSEMITE RGNL (MCE')

DME or RADAR required.	MISSED APPROACH: Climb to 1000 then climbing right turn to 3000 direct MOD VOR/DME and hold.
▼ Rwy 12 helicopter visibility reduction below ¾ SM NA. ▲ NA Circling NA northeast of Rwy 12-30.	

ASOS 132.175	NORCAL APP CON 120.95 269.45	UNICOM 122.7 (CTAF) 0
------------------------	--	---------------------------------



BACK COURSE



AJOJO I-MCE [11.5] RADAR		CAZAR I-MCE [5.5] RADAR		ZIPTO I-MCE [2.2] RADAR		1000 ↑		3000 ↷		MOD ◻	
2000		2000		640		I-MCE [0.9] REFER		I-MCE [0.5]		↘	
Disregard glide slope indications.											
		3.00° TCH 53									
6 NM		3.3 NM		1.3 NM		0.4 NM		0.6 NM			
CATEGORY	A			B		C		D			
S-12	640-1 485 (500-1)			640-1 ³ / ₈ 485 (500-1 ³ / ₈)							
CIRCLING	640-1 485 (500-1)			640-1 ¹ / ₂ 485 (500-1 ¹ / ₂)			720-2 565 (600-2)				
ZIPTO FIX MINIMUMS											
S-12	520-1 365 (400-1)			NA							
CIRCLING	560-1 405 (500-1)			620-1 465 (500-1)		620-1 ¹ / ₂ 465 (500-1 ¹ / ₂)		720-2 565 (600-2)			