

WAAS CH <b>42814</b> <b>W14A</b>	APP CRS <b>141°</b>	Rwy Idg TDZE Apt Elev	<b>6007</b> <b>64</b> <b>64</b>
--	------------------------	-----------------------------	---------------------------------------

RNAV (GPS) RWY 14

YUBA COUNTY (MYV)

⚠

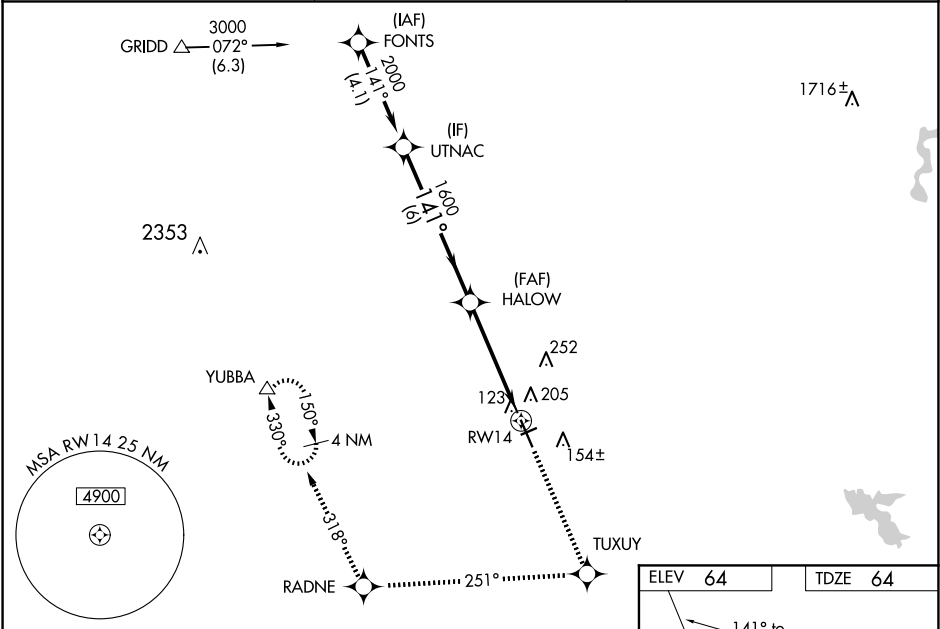
For uncompensated Baro-VNAV systems, LNAV/VNAV NA below -1.5°C (5°F) or above 54°C (130°F). DME/DME RNP-0.3 NA. Helicopter visibility reduction below ¾ SM NA. Baro-VNAV and VDP NA when using Lincoln altimeter setting. When local altimeter setting not received, use Lincoln altimeter setting and increase LPV DA to 308 feet, LNAV/VNAV DA to 514 feet and all MDA 60 feet; increase LNAV/VNAV all Cats visibility ½ mile, LNAV Cats C/D visibility ⅓ mile. Inop table does not apply to LPV all Cats. For inop MALSR increase LNAV Cats A/B visibility ¼ mile. Night landing: Rwy 5, 23 NA.

MALSR

MISSED APPROACH:

Climb to 4000 direct TUXUY and via track 251° to RADNE and via track 318° to YUBBA and hold.

ASOS <b>118.475</b>	NORCAL APP CON <b>125.4 259.1</b>	UNICOM <b>123.05 (CTAF) 0</b>
------------------------	--------------------------------------	----------------------------------



UTNAC		4000 ↑	TUXUY ✧	tr 251°	RADNE ✧	tr 318°	YUBBA △
2000 Procedure Turn NA  GP 3.00° TCH 51		HALOW ✧					
141°		*1.1 NM to RW14					
1600		RW14					
6 NM		3.5 NM		1.1 NM			
CATEGORY	A	B	C	D			
LPV DA	264- <sup>3</sup> / <sub>4</sub> 200 (200- <sup>3</sup> / <sub>4</sub> )						
LNAV/ VNAV DA	470- <sup>7</sup> / <sub>8</sub> 406 (500- <sup>7</sup> / <sub>8</sub> )						
LNAV MDA	500- <sup>3</sup> / <sub>4</sub> 436 (500- <sup>3</sup> / <sub>4</sub> )						
CIRCLING	540-1 476 (500-1)			540-1 <sup>1</sup> / <sub>2</sub> 476 (500-1 <sup>1</sup> / <sub>2</sub> )		620-2 556 (600-2)	

