

LOC/DME HLGU	APP CRS	Rwy Ldg	9020
109.15	172°	TDZE	4457
Chan 28(Y)		Apt Elev	4457

ILS or LOC/DME RWY 17

LOGAN-CACHE (LGU)

NA

-14°C

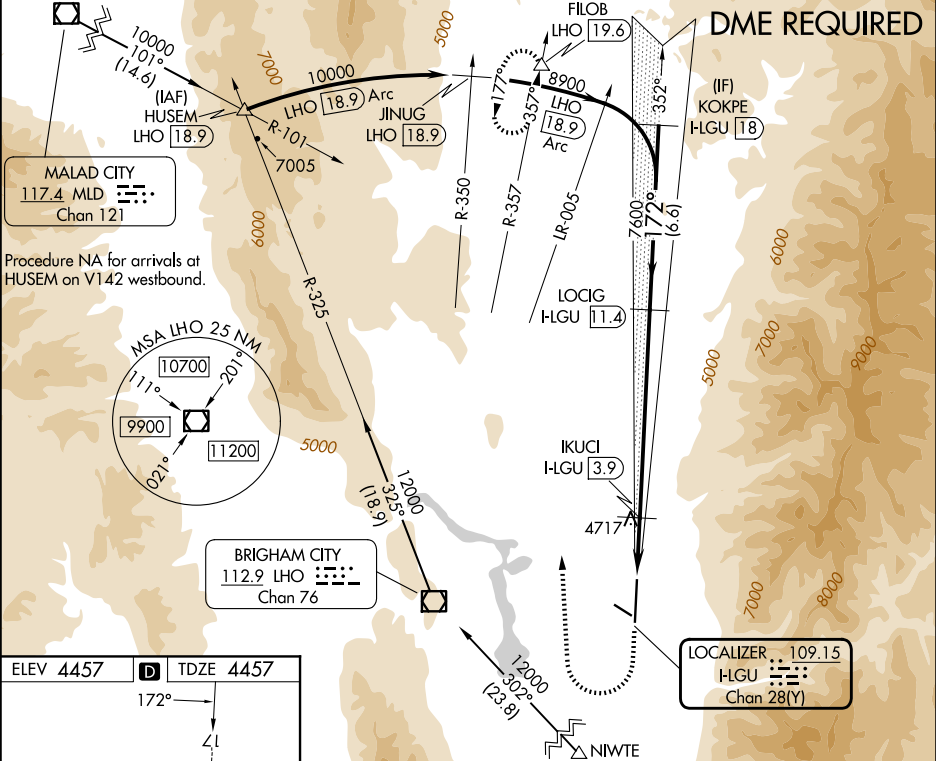
Circling NA east of Rwy 17-35.
Circling Rwy 10, 28 NA at night.
Rwy 17 helicopter visibility reduction below ¾ SM NA.

MALSR

MISSED APPROACH:

Climb to 5800 then climbing right turn to 12000 on heading 345° and on LHO VOR/DME R-357 to FILOB INT/LHO 19.6 DME and hold, continue climb-in-hold to 12000.

ASOS	SALT LAKE CENTER	UNICOM
135.275	127.7 354.125	122.8 (CTAF) 0



ELEV 4457

TDZE 4457

172°

41

AS

0

10

4075 X 60

28

35

REIL Rwy 35

HIRL Rwy 17-35

5800	12000	LHO	FILOB	Use I-LGU DME when on localizer course.	KOKPE
	hdg 345°	R-357			H-LGU 18
VGSI and ILS glidepath not coincident (VGSI Angle 3.00/TCH 45).					
I-LGU 1.7	I-LGU 3.3	IKUCI I-LGU 3.9	LOCIG I-LGU 11.4	7600	8900
				7600	
				5220	
	1.6 NM	0.6 NM	7.5 NM	6.6 NM	
CATEGORY	A	B	C	D	
S-ILS 17	4771-¾ 314 (400-¾)				
S-LOC 17	5020-¾	563 (600-¾)	5020-1¼	563 (600-1¼)	
CIRCLING	5020-1	563 (600-1)	5080-1¾ 623 (700-1¾)	5080-2 623 (700-2)	