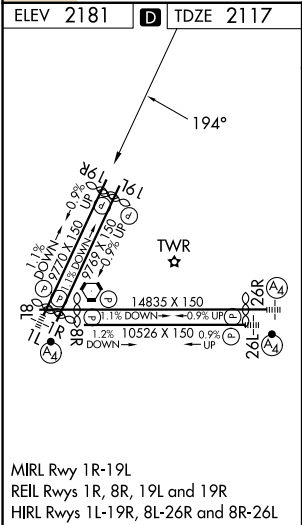
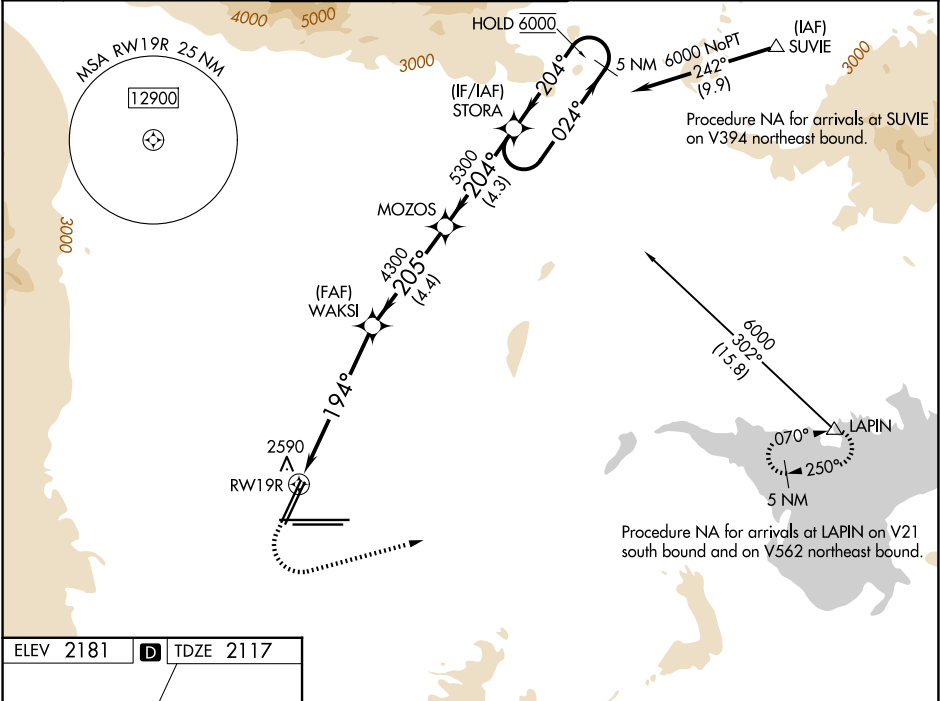


WAAS CH 50142 W19B	APP CRS 194°	Rwy Ldg TDZE Apt Elev	8416 2117 2181
--	------------------------	-----------------------------	---

RNAV (GPS) Y RWY 19R

HARRY REID INTL (LAS)

RNP APCH-GPS.				MISSED APPROACH: Climb to 2600 then climbing left turn to 6000 direct LAPIN and hold.	
Rwy 19R helicopter visibility reduction below ¾ SM NA. For uncompensated Baro-VNAV systems, LNAV/VNAV NA below 0°C or above 54°C.					
D-ATIS 132.4	LAS VEGAS APP CON 125.025 379.15 (West) 119.775 282.2 (East)	LAS VEGAS TOWER 118.75 257.8 (Rwy 1L/19R, 1R/19L) 119.9 257.8 (Rwy 8L/26R, 8R/26L)	GND CON 121.1 270.8 E of 1R/19L 121.9 254.3 W of 1L/19R	CLNC DEL 118.0	CPDLC



ELEV 2181 TDZE 2117		2600 6000 LAPIN		VGSI and RNAV glidepath not coincident (VGSI Angle 3.04/TCH 80).		STORA 5 NM Holding Pattern	
RWY 19R		WAKSI 4300		MOZOS 5300		STORA 6000	
1.8 NM to RWY 19R		1.8 NM		4.5 NM		4.4 NM	
CATEGORY		A		B		C	
LPV DA		2367-1		250 (200-1)			
LNAV/VNAV DA		2743-1¾		626 (600-1¾)			
LNAV MDA		2840-1 723 (700-1)		2840-2 723 (700-2)			
CIRCLING		3020-1¼ 839 (900-1¼)		3060-1¼ 879 (900-1¼)		3100-2¾ 919 (1000-2¾)	
						3540-3 1359 (1400-3)	