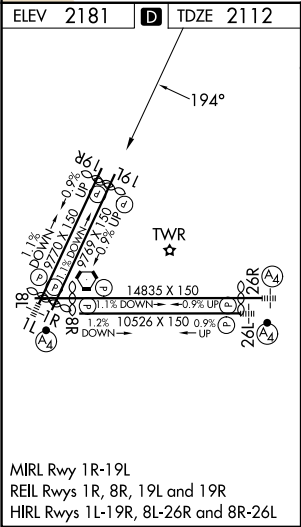
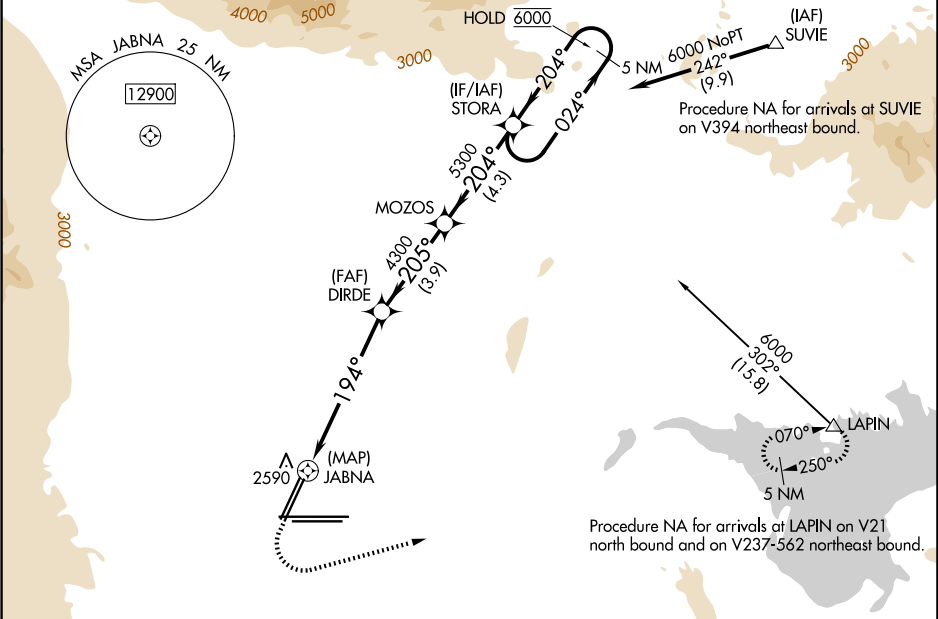


WAAS CH <b>45542</b> <b>W19A</b>	APP CRS <b>194°</b>	Rwy Ldg TDZE Apt Elev	<b>8807</b> <b>2112</b> <b>2181</b>
--	------------------------	-----------------------------	---

RNAV (GPS) Y RWY 19L  
HARRY REID INTL (LAS)

RNP APCH - GPS.			MISSED APPROACH: Climb to 2600 then climbing left turn to 6000 direct LAPIN and hold.		
▼ For uncompensated Baro-VNAV systems, LNAV/VNAV NA below 0°C or above 54°C. ▲					
D-ATIS 132.4	LAS VEGAS APP CON 125.025 379.15 (West) 119.775 282.2 (East)	LAS VEGAS TOWER 118.75 257.8 (Rwy 1L/19R, 1R/19L) 119.9 257.8 (Rwy 8L/26R, 8R/26L)	GND CON 121.1 270.8 E of 1R/19L 121.9 254.3 W of 1L/19R	CLNC DEL 118.0	CPDLC



2600		6000	LAPIN	VGSI and RNAV glidepath not coincident (VGSI Angle 3.00/TCH 75).	
JABNA		DIRDE	MOZOS	STORA	5 NM Holding Pattern
1.3 NM to JABNA		4300	5300	6000	
0.5		1.3	5 NM	3.9 NM	4.3 NM
CATEGORY	A	B	C	D	
LPV DA	2312-1		200 (200-1)		
LNAV/VNAV DA	2677-1½		565 (500-1½)		
LNAV MDA	2740-1		628 (600-1)	2740-1¾ 628 (600-1¾)	
CIRCLING	3020-1¼ 839 (900-1¼)		3060-1¼ 879 (900-1¼)	3100-2¾ 919 (1000-2¾)	3540-3 1359 (1400-3)