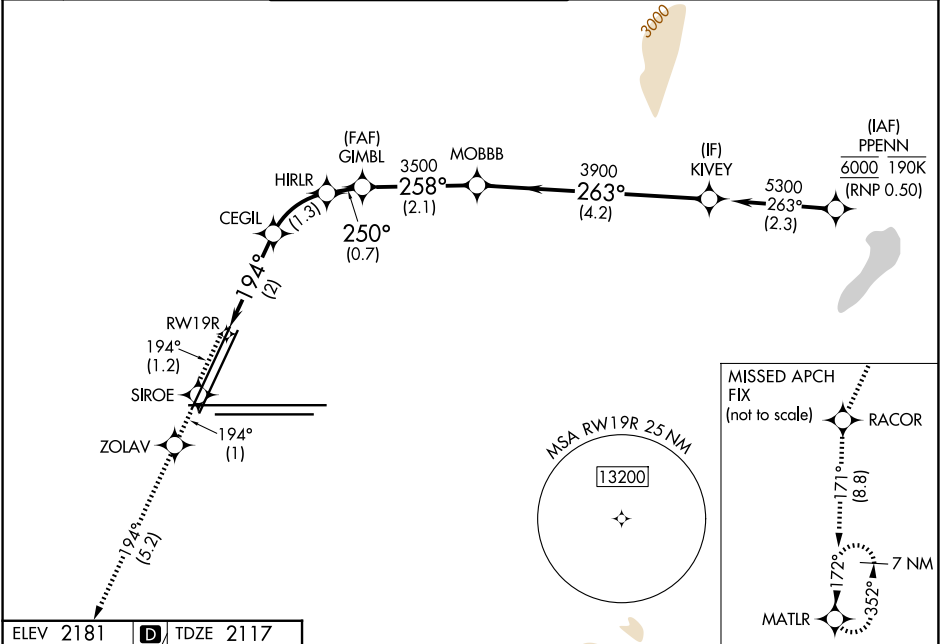


APP CRS	Rwy Ldg	8416
194°	TDZE	2117
	Apt Elev	2181

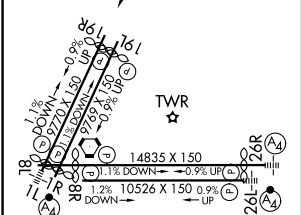
RNAV (RNP) Z RWY 19R
HARRY REID INTL (LAS)

RNP AR APCH - GPS, RF, min RNP 0.50. Authorization required. Missed approach requires RNP < 1.00.	MISSED APPROACH: Climb to 7000 on the RNAV missed approach route to MATLR and hold, continue climb-in-hold to 7000.
For uncompensated Baro-VNAV systems, procedure NA below 0°C or above 54°C.	* Missed approach requires minimum climb of 273 feet per NM to 2940. # Missed approach requires minimum climb of 235 feet per NM to 2960.

D-ATIS	LAS VEGAS APP CON	LAS VEGAS TOWER	GND CON	CLNC DEL	CPDLC
132.4	125.025 379.15 (West) 119.775 282.2 (East)	118.75 257.8 (Rwy 1L/19R, 1R/19L) 119.9 257.8 (Rwy 8L/26R, 8R/26L)	121.1 270.8 E of 1R/19L 121.9 254.3 W of 1L/19R	118.0	



ELEV 2181	TDZE 2117
-----------	-----------



7000	SIROE	ZOLAV	RACOR	MATLR		
↑ tr 194°	✧ tr 194°	✧ tr 194°	✧ tr 194°	✧ tr 171°	✧	KIVEY
VGSI and RNAV glidepath not coincident (VGSI Angle 3.04/TCH 80).						
	CEGIL	HIRLR	GIMBL	MOBBB		
	2846	3277	3500			
	194°	250°	258°	263°		
	2 NM	1.3 NM	0.7 NM	2.1 NM	4.2 NM	
			3500	3900		5300
						GP 3.24° TCH 75
CATEGORY		A	B	C	D	
RNP 0.10 DA*		2558-1 ³ / ₈ 441 (400-1 ³ / ₈)				
RNP 0.20 DA#		2608-1 ³ / ₈ 491 (500-1 ³ / ₈)				
RNP 0.30 DA		2669-1 ⁵ / ₈ 552 (500-1 ⁵ / ₈)				
AUTHORIZATION REQUIRED						

MIRL Rwy 1R-19L
REIL Rwy 1R, 8R, 19L and 19R
HIRL Rwy 1L-19R, 8L-26R and 8R-26L