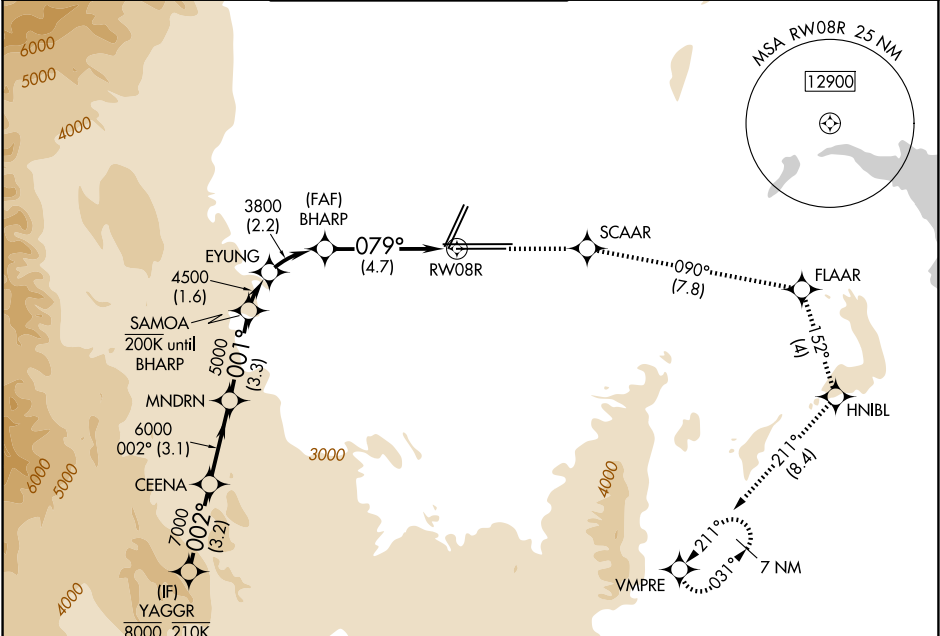


APP CRS	Rwy Ldg	10526
079°	TDZE	2157
	Apt Elev	2181

RNAV (RNP) RWY 8R  
HARRY REID INTL (LAS)

RNP AR APCH. RF required.			MISSED APPROACH: Climb to 7000 on the RNAV missed approach route to VMPRE and hold, continue climb-in-hold to 7000.		
▼ For uncompensated Baro-VNAV systems, procedure NA below 0°C or above 54°C.					
D-ATIS	LAS VEGAS APP CON	LAS VEGAS TOWER	GND CON	CLNC DEL	CPDLC
132.4	125.025 379.15 (West) 119.775 282.2 (East)	118.75 257.8 (Rwy 1L/19R, 1R/19L) 119.9 257.8 (Rwy 8L/26R, 8R/26L)	121.1 270.8 E of 1R/19L 121.9 254.3 W of 1L/19R	118.0	



(RNP 0.30)		ELEV 2181		D		TDZE 2157	
YAGGR		7000 ↑	SCAAR ✧	FLAAR tr 090° ✧	HNIBL tr 152° ✧	VMPRE tr 211° ✧	
CEENA		MNDRN		SAMOA		EYUNG	BHARP
8000	002°	7000	001°	6000	5000	4500	3800
GP 3.15°							079°
TCH 60							RW08R
	← 3.2 NM	← 3.1 NM	← 3.3 NM	← 1.6 NM	← 2.2 NM	← 4.7 NM	
CATEGORY	A		B		C		D
RNP 0.10 DA	2544-1 1/8		387 (400-1 1/8)				
RNP 0.30 DA	2613-1 3/8		456 (500-1 3/8)				
AUTHORIZATION REQUIRED							

Diagram illustrating the runway layout and navigation aids. The runway is labeled RW08R. The diagram shows the runway axis and various navigation aids (YAGGR, CEENA, MNDRN, SAMOA, EYUNG, BHARP, VMPRE) with their respective distances and bearings. A diagram of the runway layout is shown, including the runway (RW08R) and various navigation aids (YAGGR, CEENA, MNDRN, SAMOA, EYUNG, BHARP, VMPRE) with their respective distances and bearings.

ELEV 2181

D

TDZE 2157

YAGGR

CEENA

MNDRN

SAMOA

EYUNG

BHARP

VMPRE

RW08R

GP 3.15°

TCH 60

3.2 NM

3.1 NM

3.3 NM

1.6 NM

2.2 NM

4.7 NM

CATEGORY

A

B

C

D

RNP 0.10 DA

2544-1 1/8

387 (400-1 1/8)

RNP 0.30 DA

2613-1 3/8

456 (500-1 3/8)

AUTHORIZATION REQUIRED

MIRL Rwy 1R-19L

REIL Rwys 1R, 8R, 19L and 19R

HIRL Rwys 1L-19R, 8L-26R and 8R-26L