
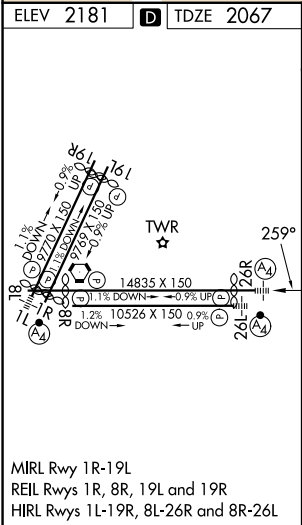
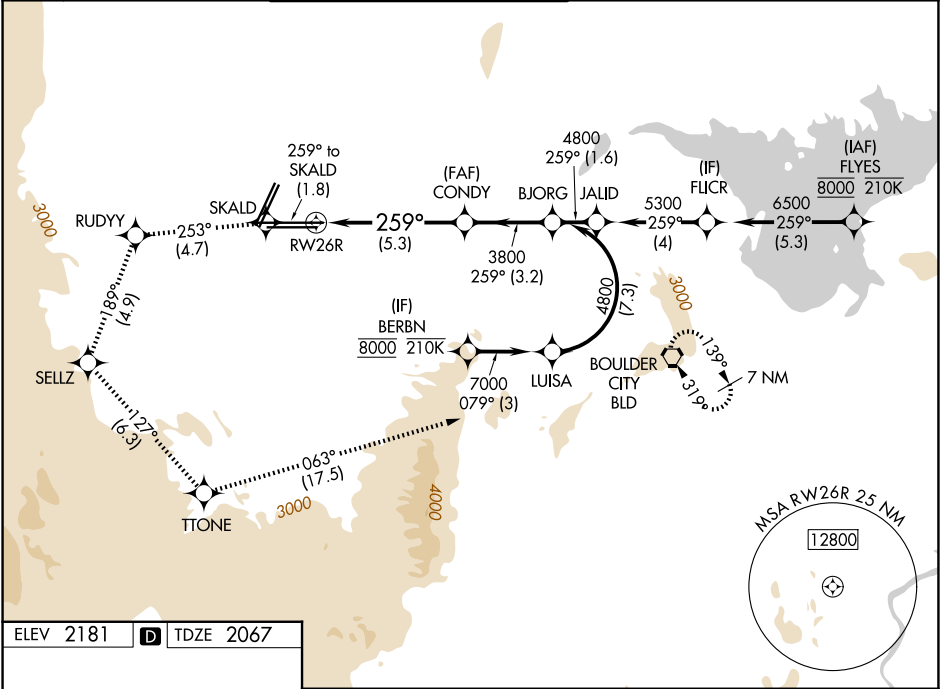


APP CRS	Rwy Ldg	12638
259°	TDZE	2067
	Apt Elev	2181

RNAV (RNP) RWY 26R

HARRY REID INTL (LAS)

RNP AR APCH-GPS.		MALS 	MISSED APPROACH: Cimb to 7000 on the RNAV missed approach route to BLD VORTAC and hold. *Missed approach requires minimum climb of 230 feet per NM to 3200.			
▼ For uncompensated Baro-VNAV systems, procedure NA below -1°C or above 54°C.						
D-ATIS 132.4	LAS VEGAS APP CON 125.025 379.15 (West) 119.775 282.2 (East)	LAS VEGAS TOWER 118.75 257.8 (Rwy 1L/19R, 1R/19L) 119.9 257.8 (Rwy 8L/26R, 8R/26L)		GND CON 121.1 270.8 E of 1R/19L 121.9 254.3 W of 1L/19R	CLNC DEL 118.0	CPDLC



7000	SKALD	tr 259°	tr 253°	RUDYY	tr 189°	SELLZ	tr 127°	TTONE	tr 063°	BLD	tr 063°	BJORG
VGSI and RNAV glidepath not coincident (VGSI Angle 3.00/TCH 84). See planview for multiple IF locations.												
CATEGORY A B C D												
RNP 0.30 DA* 2457-7/8 390 (300-7/8)												
RNP 0.30 DA 2508-1 441 (400-1)												
AUTHORIZATION REQUIRED												