

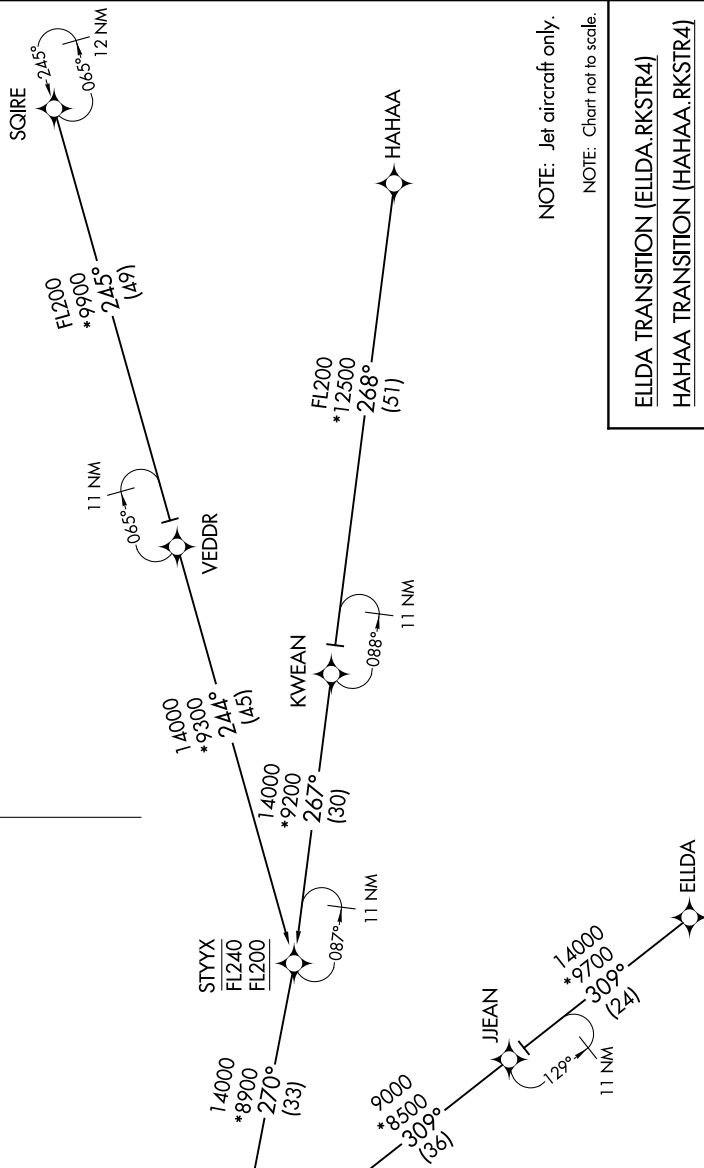
RKSTR FOUR ARRIVAL (RNAV) Transition Routes

AL-662 (FAA)

HARRY REID INTL (LAS)
LAS VEGAS, NEVADA

LAS VEGAS APP CON
119.775 282.2
D-ATIS
132.4
LAS VEGAS TOWER
118.75 257.8 (Rwys 11
119.9 257.8 (Rwys 8L/

See following page
for arrival routes.

$$\begin{array}{r} \text{PEHTY} \\ \hline 16000 \quad 25 \\ \hline 14000 \end{array}$$


NOTE: Jet aircraft only.

NOTE: Chart not to scale.

ELDA TRANSITION (ELDA.RKSTR4)
HAAH TRANSITION (HAAH.RKSTR4)
SQIRE TRANSITION (SQIRE.RKSTR4)

(CONTINUED ON FOLLOWING PAGE)

SW-4, 07 AUG 2025 to 04 SEP 2025

RKSTR FOUR ARRIVAL (RNAV) Transition Routes

LAS VEGAS, NEVADA
HARRY REID INTL (LAS)