

RATPK THREE DEPARTURE (RNAV)

AL-662 (FAA)

HARRY REID INTL (LAS)  
LAS VEGAS, NEVADA

D-ATIS  
132.4  
CLNC DEL  
118.0  
CPDLC  
GND CON  
121.1 270.8 E of 1R/19L  
121.9 254.3 W of 1L/19R  
LAS VEGAS TOWER  
118.75 257.8 (Rwys 1L/19R, 1R/19L)  
119.9 257.8 (Rwys 8L/26R, 8R/26L)  
LAS VEGAS DEP CON  
125.9 307.25 (Rwys 8L/R)  
133.95 353.7 (Rwys 1L/R, 19L/R, 26L/R)

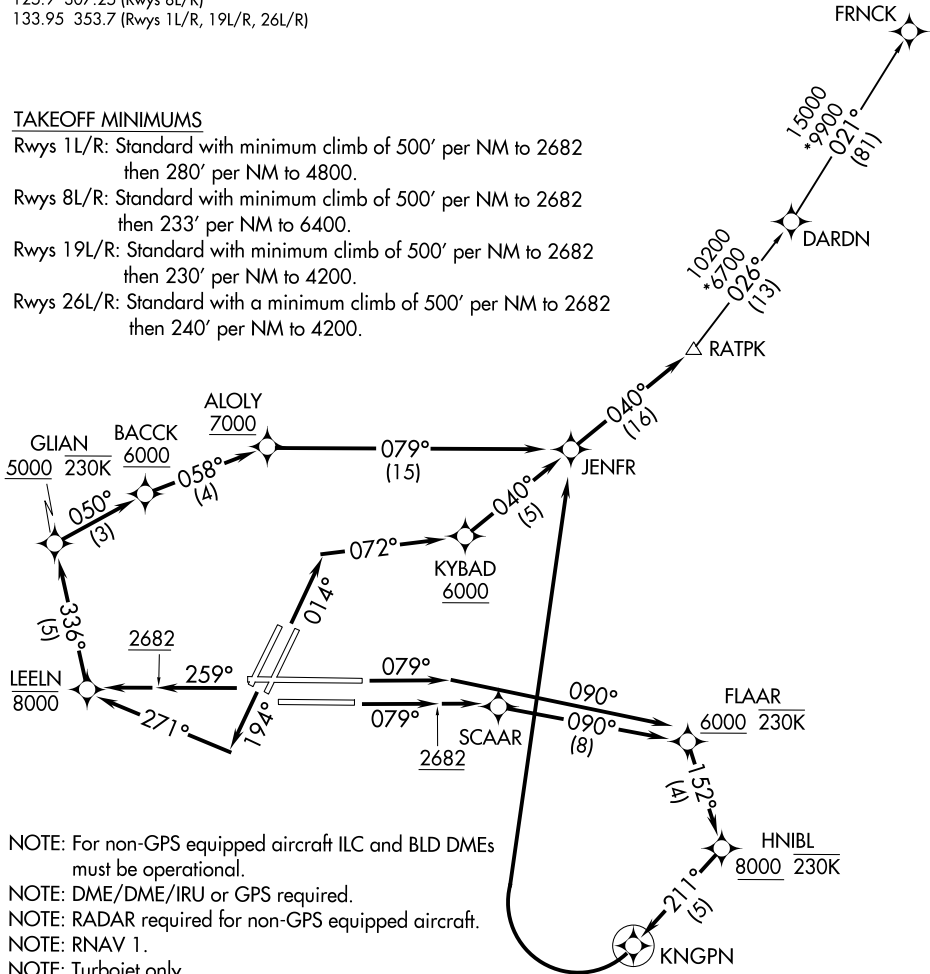


**TOP ALTITUDE:  
FL190**

TAKEOFF MINIMUMS

- Rwys 1L/R: Standard with minimum climb of 500' per NM to 2682 then 280' per NM to 4800.
- Rwys 8L/R: Standard with minimum climb of 500' per NM to 2682 then 233' per NM to 6400.
- Rwys 19L/R: Standard with minimum climb of 500' per NM to 2682 then 230' per NM to 4200.
- Rwys 26L/R: Standard with a minimum climb of 500' per NM to 2682 then 240' per NM to 4200.

SW-4, 07 AUG 2025 to 04 SEP 2025



NOTE: For non-GPS equipped aircraft ILC and BLD DMEs must be operational.  
NOTE: DME/DME/IRU or GPS required.  
NOTE: RADAR required for non-GPS equipped aircraft.  
NOTE: RNAV 1.  
NOTE: Turbojet only.

(CONTINUED ON FOLLOWING PAGE)

NOTE: Chart not to scale.

RATPK THREE DEPARTURE (RNAV)

SW-4, 07 AUG 2025 to 04 SEP 2025