

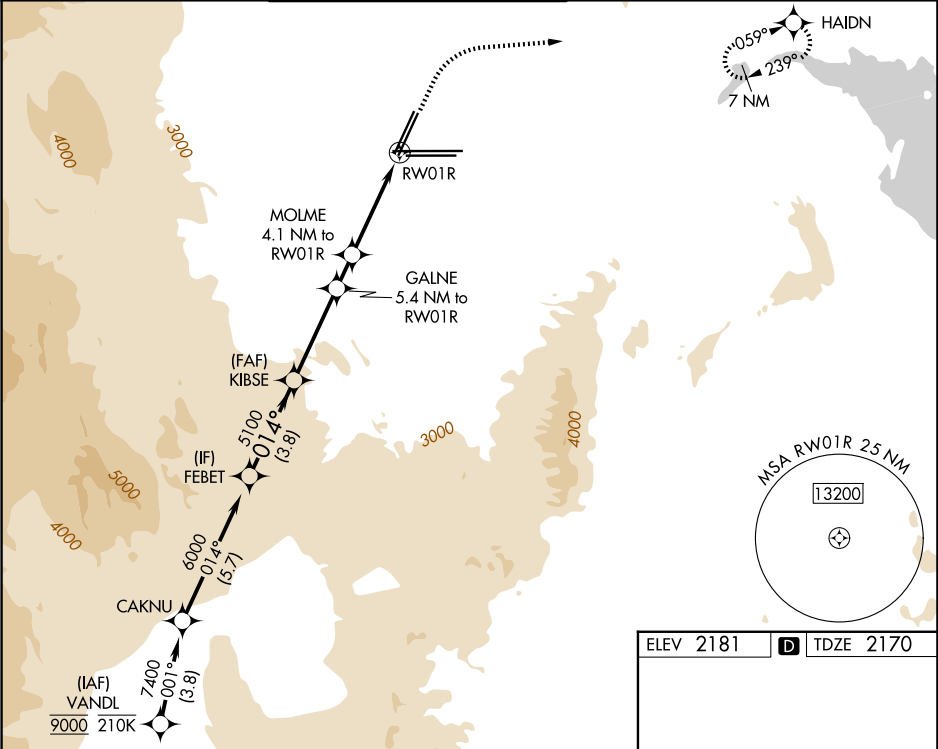
WAAS CH <b>42800</b> <b>W01A</b>	APP CRS <b>014°</b>	Rwy Ldg TDZE Apt Elev <b>8784</b> <b>2170</b> <b>2181</b>
--	------------------------	--

RNAV (GPS) RWY 1R

HARRY REID INTL (LAS)

RNP APCH - GPS. RADAR required.	MISSED APPROACH: Climb to 2700 then climbing right turn to 7000 direct HAI DN and hold, continue climb-in-hold to 7000.
<div><div></div><div>Rwy 1R helicopter visibility reduction below ¾ SM NA. For uncompensated Baro-VNAV systems, LNAV/VNAV NA below 0°C or above 54°C.</div></div>	

D-ATIS <b>132.4</b>	LAS VEGAS APP CON <b>125.025 379.15</b> (West) <b>119.775 282.2</b> (East)	LAS VEGAS TOWER <b>118.75 257.8</b> (Rwy 1L/19R, 1R/19L) <b>119.9 257.8</b> (Rwy 8L/26R, 8R/26L)	GND CON <b>121.1 270.8</b> E of 1R/19L <b>121.9 254.3</b> W of 1L/19R	CLNC DEL <b>118.0</b>	CPDLC
------------------------	--	--	---	--------------------------	-------



FEBET		VGSI and RNAV glidepath not coincident (VGSI Angle 3.00/TCH 76).				2700	7000	HAI DN
GP 3.00° TCH 60		6000	5100	3940	3520			
		014°						
		3.8 NM	3.6 NM	1.3 NM	1.8 NM	2.2 NM		
CATEGORY		A		B		C		D
LPV DA		2458-7 <sup>8</sup> / <sub>8</sub>		288 (300-7 <sup>8</sup> / <sub>8</sub> )				
LNAV/ VNAV DA		2641-1 <sup>3</sup> / <sub>8</sub>		471 (500-1 <sup>3</sup> / <sub>8</sub> )				
LNAV MDA		2960-1 790 (800-1)	2960-1 <sup>1</sup> / <sub>4</sub> 790 (800-1 <sup>1</sup> / <sub>4</sub> )	2960-2 <sup>1</sup> / <sub>2</sub> 790 (800-2 <sup>1</sup> / <sub>2</sub> )				
CIRCLING		3020-1 <sup>1</sup> / <sub>4</sub> 839 (900-1 <sup>1</sup> / <sub>4</sub> )	3060-1 <sup>1</sup> / <sub>4</sub> 879 (900-1 <sup>1</sup> / <sub>4</sub> )	3100-2 <sup>3</sup> / <sub>4</sub> 919 (1000-2 <sup>3</sup> / <sub>4</sub> )		3540-3 1359 (1400-3)		

