

LOC/DME F-LAS	APP CRS	Rwy Ldg	26R	26L
110.3	259°	TDZE	12638	10526
Chan 40		Apt Elev	2067	2069
			2181	2181

ILS Z or LOC Z RWY 26R
HARRY REID INTL (LAS)

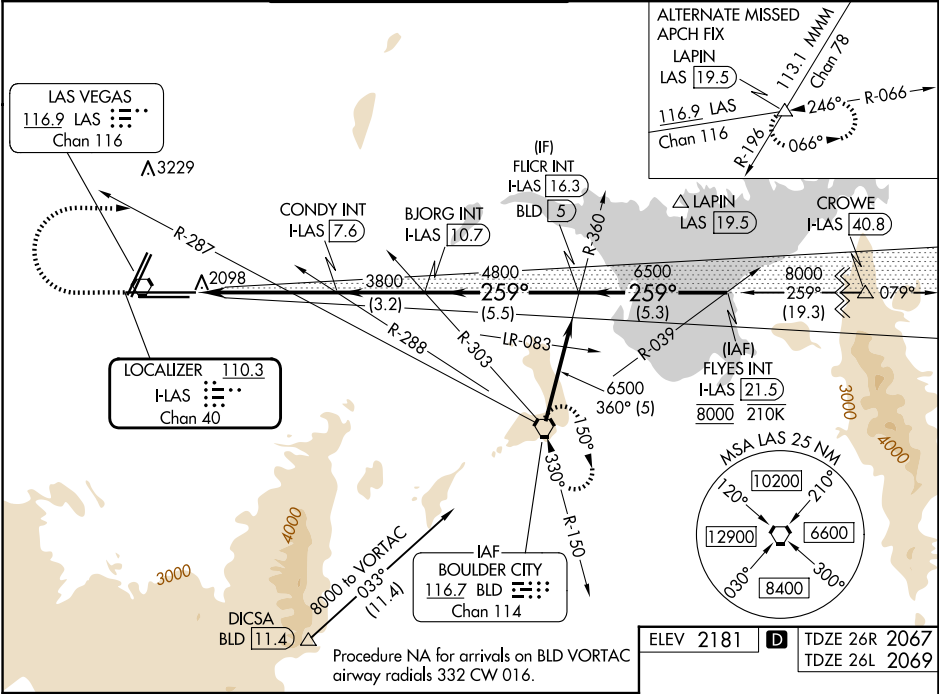
⚠ For inop ALS, increase S-ILS-26R all Cats visibility to ½ SM, S-LOC-26R Cat E visibility to 1 ¾ SM. Inop table does not apply to sidestep 26L.




MALS Rwy 26R

MALSF Rwy 26L

MISSED APPROACH: Climb to 3200 then climbing right turn to 6000 on heading 079° and on BLD R-287 to BLD VORTAC and hold, continue climb-in-hold to 6000.

D-ATIS	LAS VEGAS APP CON	LAS VEGAS TOWER	GND CON	CLNC DEL	CPDLC
132.4	125.025 379.15 (West) 119.775 282.2 (East)	118.75 257.8 (Rwy 1L/19R, 1R/19L) 119.9 257.8 (Rwy 8L/26R, 8R/26L)	121.1 270.8 E of 1R/19L 121.9 254.3 W of 1L/19R	118.0	



3200	6000	BLD R-287	BLD	VGSI and ILS glidepath not coincident (VGSI Angle 3.00/TCH 84).	FLYES INT I-LAS 21.5
					
	hdg 079°				
		CONDY INT I-LAS 7.6		BJORG INT I-LAS 10.7	FLICR INT I-LAS 16.3
				BLD 5	
					259°
					8000
					6500
					3800
					4800
					3800
					GS 3.00° TCH 60

ELEV 2181 **D** TDZE 26R 2067
TDZE 26L 2069

MIRL Rwy 1R-19L
REIL Rws 1R, 8R, 19L and 19R
HIRL Rws 1L-19R, 8L-26R and 8R-26L
FAF to MAP 5.3 NM

Knots 60 90 120 150 180
Min:Sec 5:18 3:32 2:39 2:07 1:46