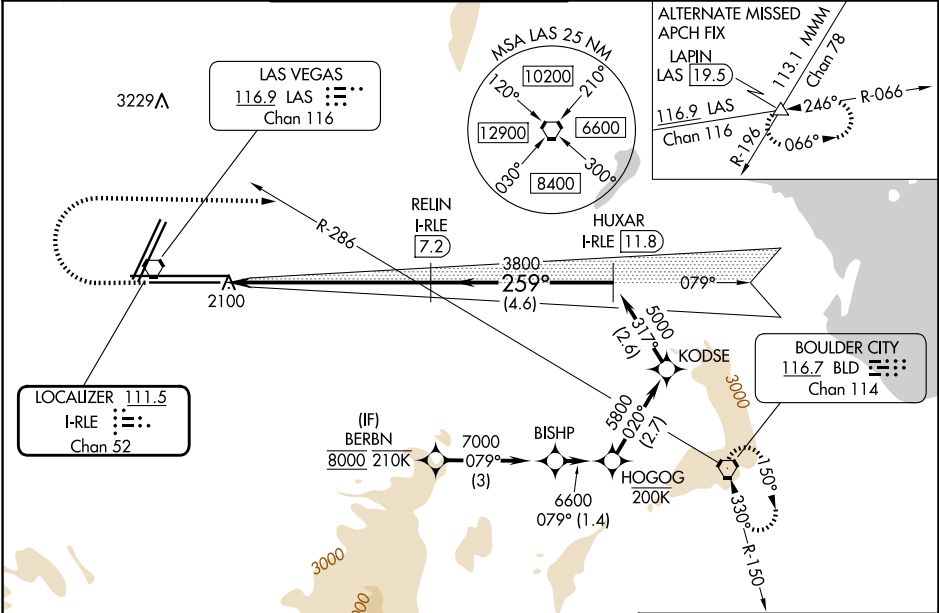


LOC/DME I-RLE	APP CRS	Rwy Ldg	26L	26R
111.5	259°	TDZE	10526	12638
Chan 52		Apt Elev	2069	2067
			2181	2181

ILS Y or LOC Y RWY 26L
HARRY REID INTL (LAS)

RNP APCH - GPS.					
DME required.			MALSF Rwy 26L	MALS Rwy 26R	MISSED APPROACH: Climb to 3200 then climbing right turn to 6000 heading 080° and on BLD R-286 to BLD VORTAC and hold, continue climb-in-hold to 6000.
▼ Inop table does not apply to S-ILS 26L or Sidestep 26R. For inop ALS increase S-LOC 26L Cats C and D visibility to 1 ½ SM.			A4	A4	
D-ATIS	LAS VEGAS APP CON	LAS VEGAS TOWER	GND CON	CNLC DEL	CPDLC
132.4	125.025 379.15 (West) 119.775 282.2 (East)	118.75 257.8 (Rwy 1L/19R, 1R/19L) 119.9 257.8 (Rwy 8L/26R, 8R/26L)	121.1 270.8 E of 1R/19L 121.9 254.3 W of 1L/19R	118.0	



3200	6000	BLD R-286	BLD	VGSI and ILS glidepath not coincident (VGSI Angle 3.00/TCH 84).	BERBN
↑	hdg 080°				
		I-RLE 1.9	I-RLE 3.1	I-RLE 7.2	I-RLE 11.8
		3800	3800	3800	3800
		259°	317°	020°	079°
		1.2 NM	4.1 NM	4.6 NM	2.6 NM
					2.7 NM
					1.4 NM
					3 NM
CATEGORY	A	B	C	D	
S-ILS 26L	2269-¾ 200 (100-¾)				
S-LOC 26L	2520-¾ 451 (400-¾)	2520-1 451 (400-1)			
SIDESTEP 26R	2560-1 493 (400-1)	2560-1½ 493 (400-1½)		2560-2 493 (400-2)	
CIRCLING	3020-1¼ 839 (900-1¼)	3060-1¼ 879 (900-1¼)	3100-2¾ 919 (1000-2¾)	3540-3 1359 (1400-3)	

