

LOC/DME I-CUA <b>110.1</b> Chan <b>38</b>	APP CRS <b>014°</b>	Rwy Ldg <b>8402</b> TDZE <b>2176</b> Apt Elev <b>2181</b>
---	------------------------	---

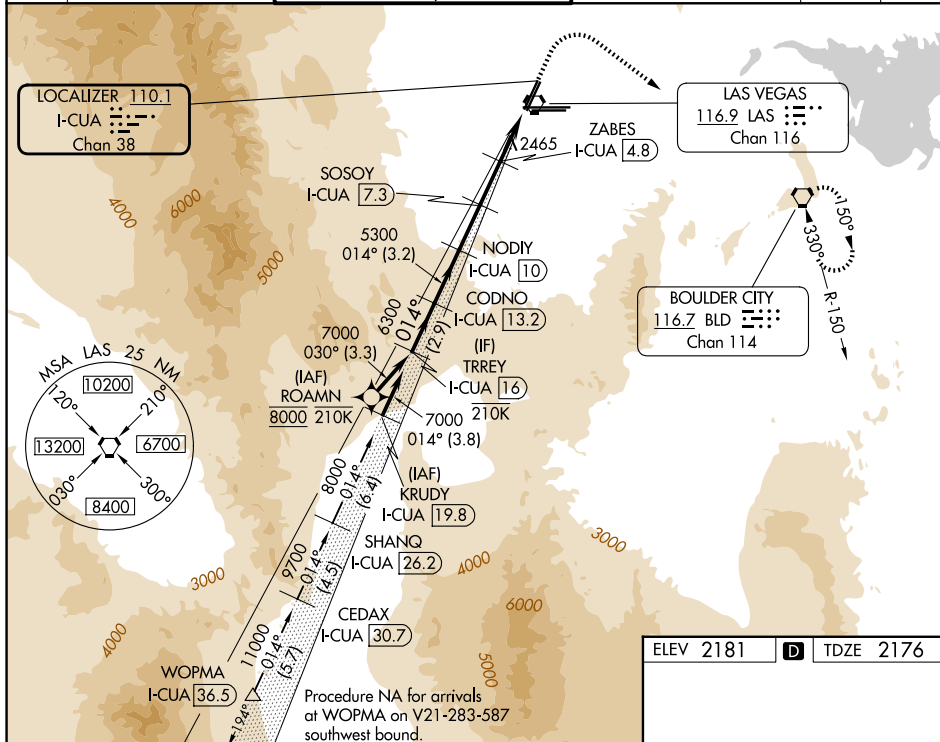
ILS or LOC RWY 1L  
HARRY REID INTL (LAS)

DME required. RNP APCH-GPS. From ROAMN.	MALSF	MISSED APPROACH: Climb to 3000 then climbing
---	-------	--

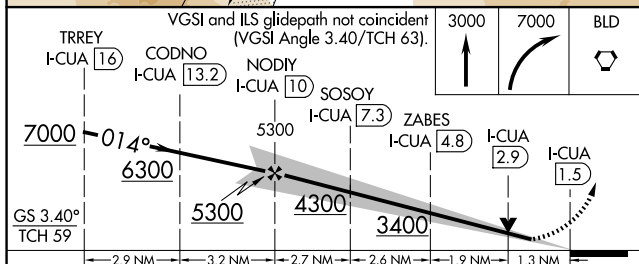
- |          |  |
|----------|--|
| <b>T</b> | Rwy 1L helicopter visibility reduction below $\frac{3}{4}$ SM NA.        |
| <b>A</b> | For inop ALS, increase S-ILS 1L all Cats visibility to $\frac{7}{8}$ SM. |

**MISSED APPROACH:** Climb to 3000 then climbing right turn to 7000 direct BLD VORTAC and hold, continue climb-in-hold to 7000.

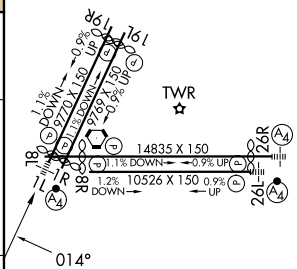
D-ATIS	LAS VEGAS APP CON		LAS VEGAS TOWER		GND CON		CLNC DEL	CPDLC
132.4	125.025	379.15 (West)	118.75	257.8 (Rwy 1L/19R, 1R/19L)	121.1	270.8 E of 1R/19L		
	119.775	282.2 (East)	119.9	257.8 (Rwy 8L/26R, 8R/26L)	121.9	254.3 W of 1L/19R		



ELEV 2181	<b>D</b>	TDZE 2176
-----------	----------	-----------



CATEGORY	A	B	C	D
S-ILS 1L	2460- <sup>3</sup> / <sub>4</sub> 284 (300- <sup>3</sup> / <sub>4</sub> )			
S-LOC 1L	2720- <sup>3</sup> / <sub>4</sub> 544 (600- <sup>3</sup> / <sub>4</sub> )		2720-1 <sup>3</sup> / <sub>8</sub> 544 (600-1 <sup>3</sup> / <sub>8</sub> )	
CIRCLING	3020-1 <sup>1</sup> / <sub>4</sub> 839 (900-1 <sup>1</sup> / <sub>4</sub> )	3060-1 <sup>1</sup> / <sub>4</sub> 879 (900-1 <sup>1</sup> / <sub>4</sub> )	3100-2 <sup>3</sup> / <sub>4</sub> 919 (1000-2 <sup>3</sup> / <sub>4</sub> )	3540-3 1359 (1400-3)



MIRL Rwy 1R-19L  
REIL Rwys 1R, 8R, 19L and 19R  
HIRL Rwys 1L-19R, 8L-26R and 8R-26L

HARRY REID INTL (LAS)  
ILS or LOC RWY 1L